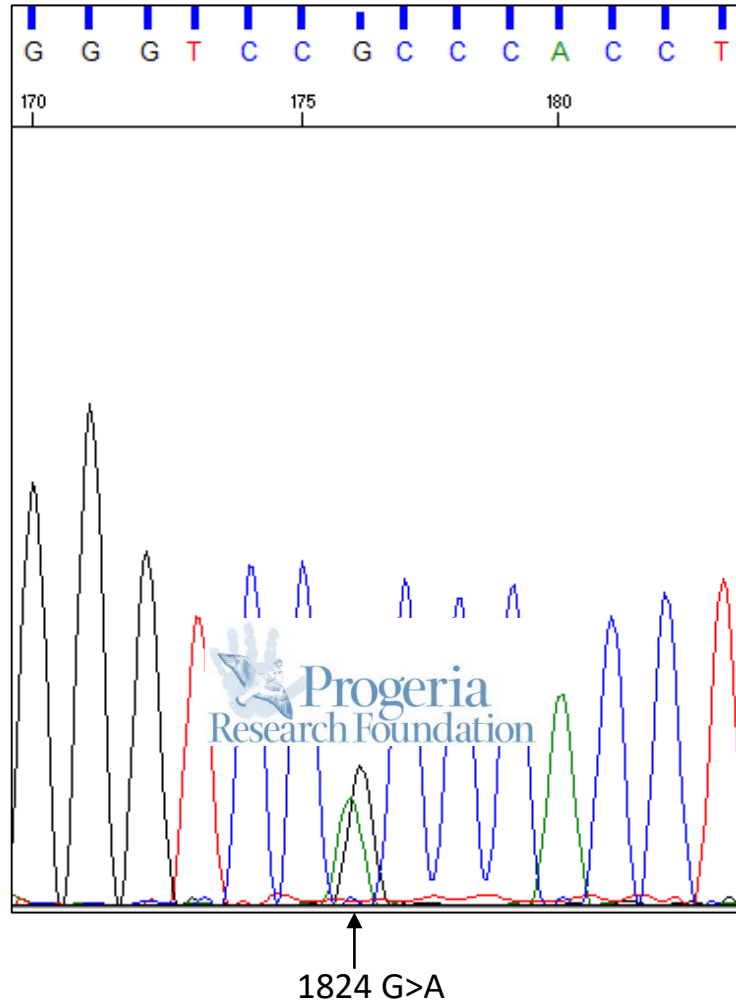


HGADFN003

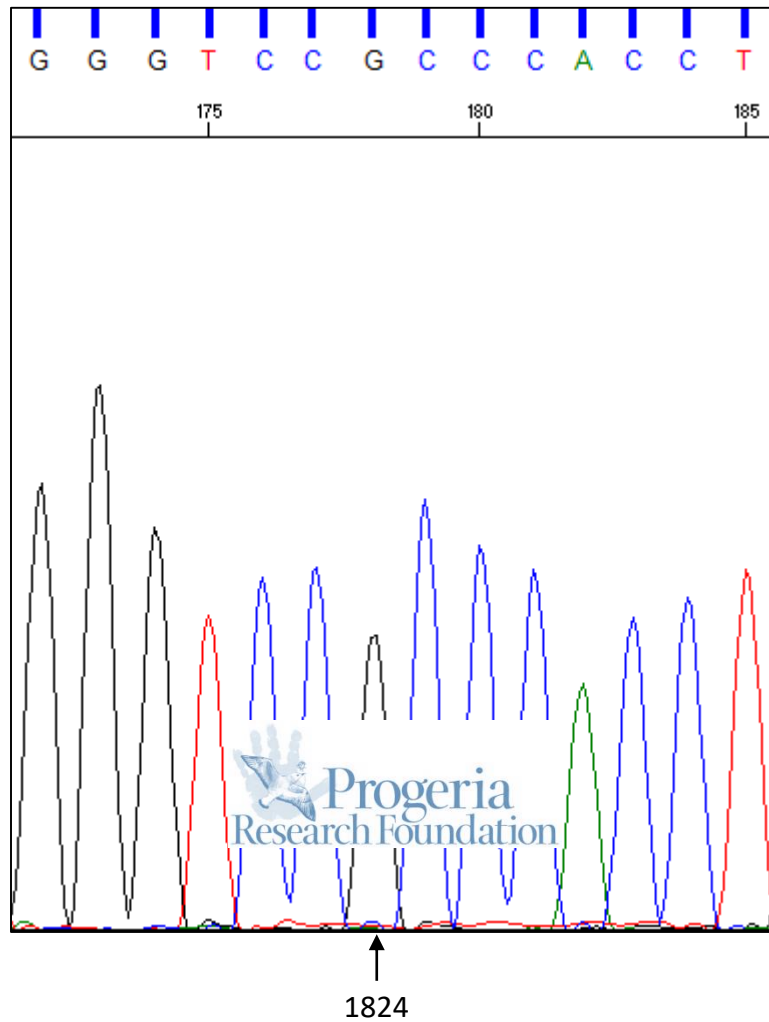
LMNA Exon 11, heterozygous c.1824 C>T (p.Gly608Gly)



Note: Reverse primer was used for sequencing, so complement strand is shown

HGMDFN090

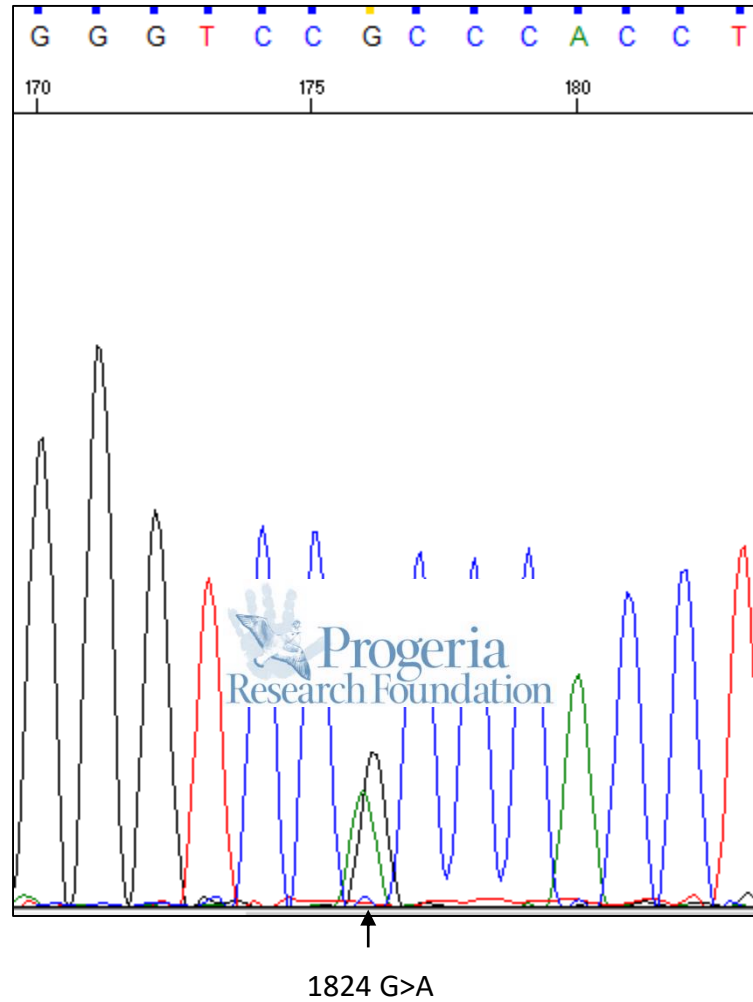
LMNA Exon 11, normal



Note: Reverse primer was used for sequencing, so complement strand is shown

HGADFN122

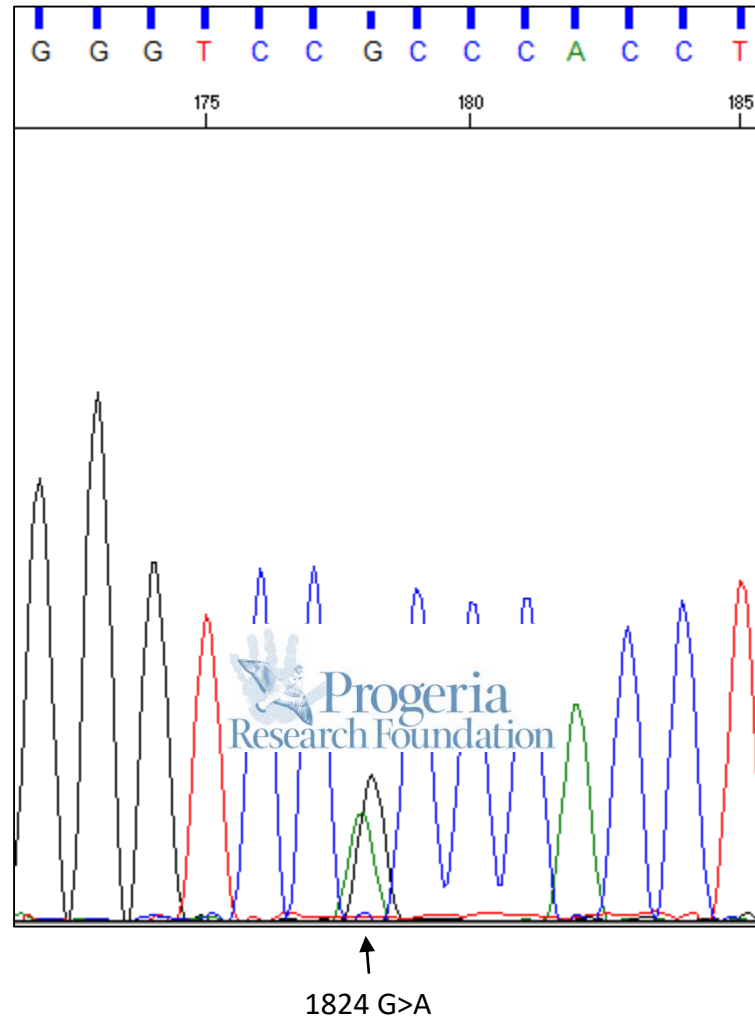
LMNA Exon 11, heterozygous c.1824 C>T (p.Gly608Gly)



Note: Reverse primer was used for sequencing, so complement strand is shown

HGADFN127

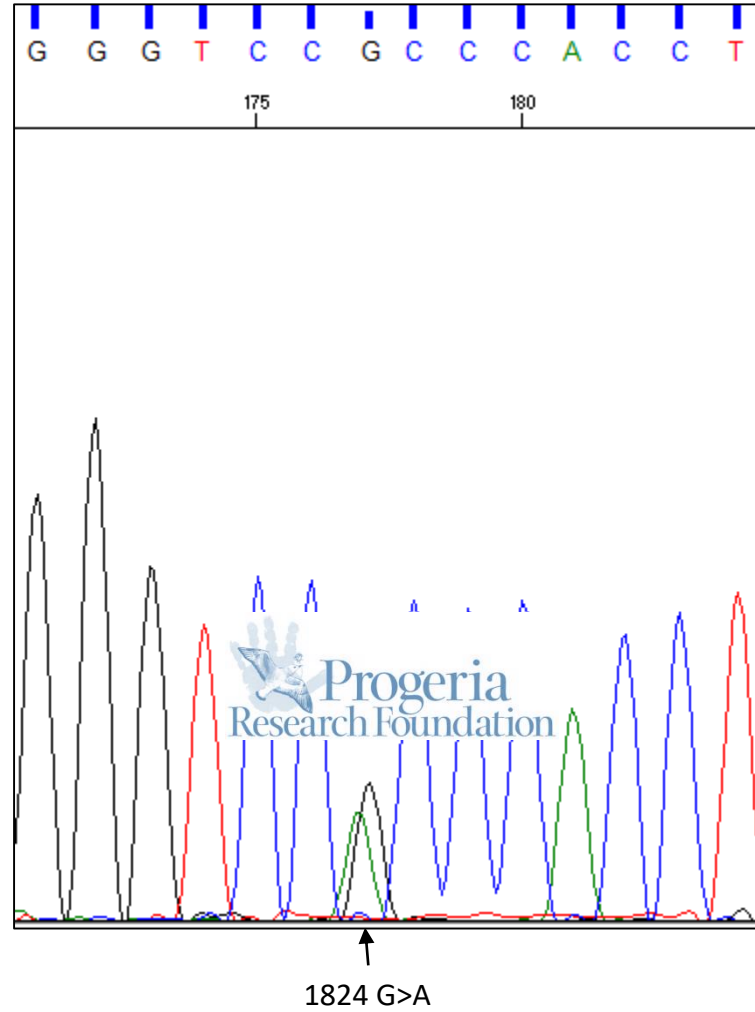
LMNA Exon 11, heterozygous c.1824 C>T (p.Gly608Gly)



Note: Reverse primer was used for sequencing, so complement strand is shown

HGADFN143

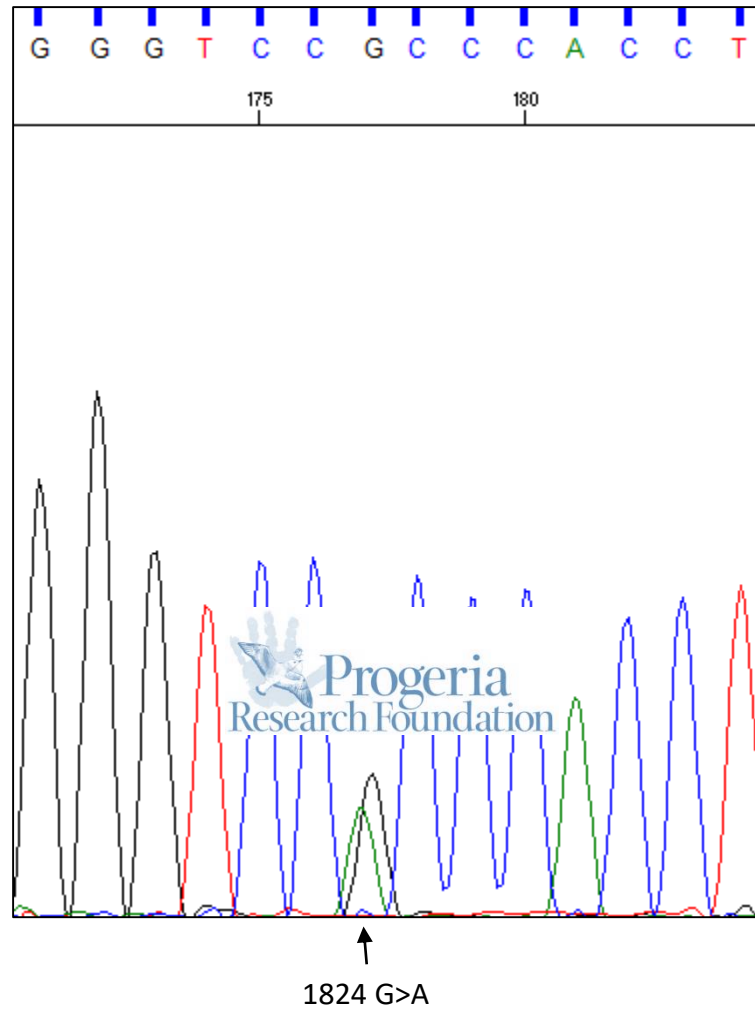
LMNA Exon 11, heterozygous c.1824 C>T (p.Gly608Gly)



Note: Reverse primer was used for sequencing, so complement strand is shown

HGADFN155

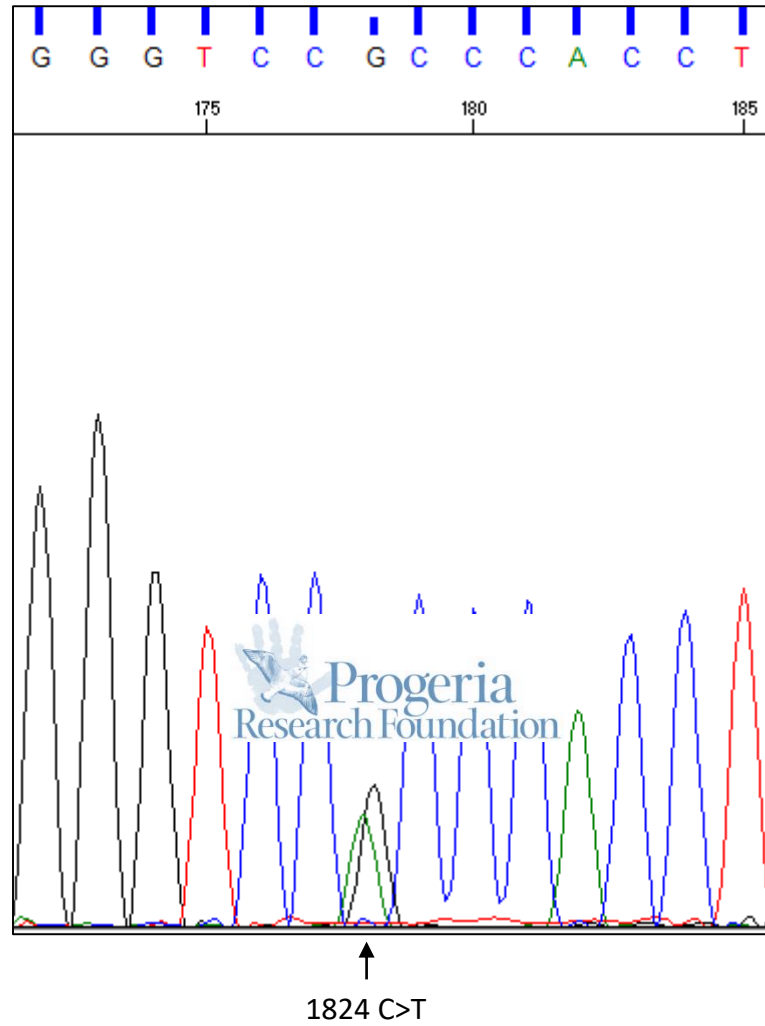
LMNA Exon 11, heterozygous c.1824 C>T (p.Gly608Gly)



Note: Reverse primer was used for sequencing, so complement strand is shown

HGADFN164

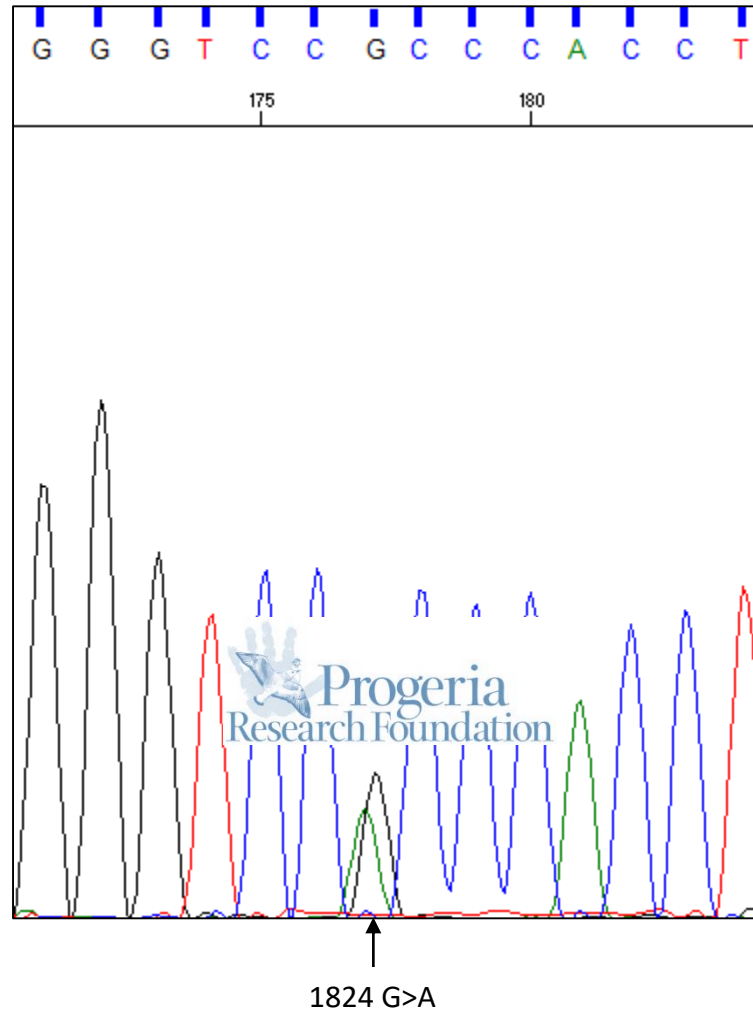
LMNA Exon 11, heterozygous c.1824 C>T (p.Gly608Gly)



Note: Reverse primer was used for sequencing, so complement strand is shown

HGADFN167

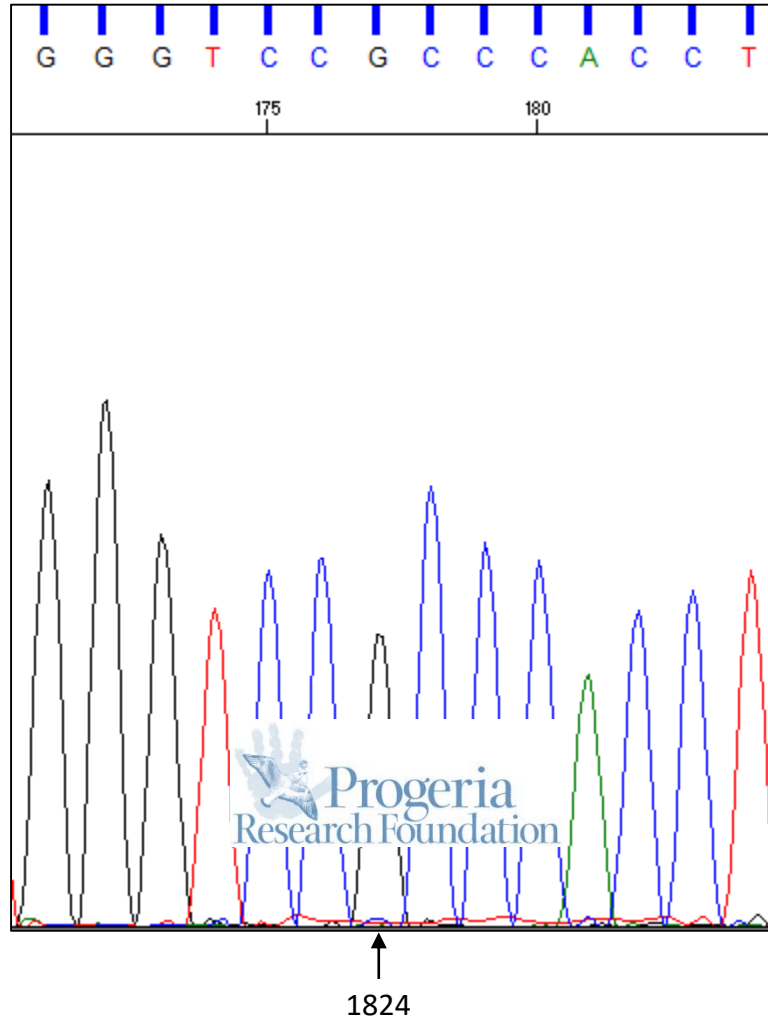
LMNA Exon 11, heterozygous c.1824 C>T (p.Gly608Gly)



Note: Reverse primer was used for sequencing, so complement strand is shown

HGFDFN168

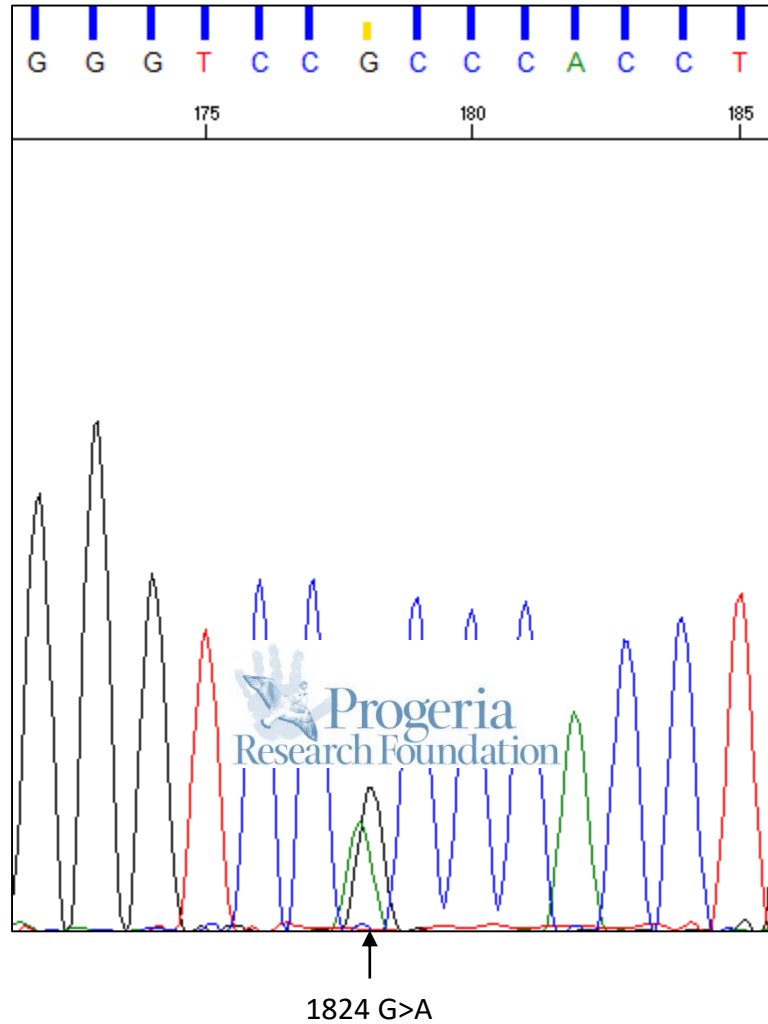
LMNA Exon 11, normal



Note: Reverse primer was used for sequencing, so complement strand is shown

HGADFN169

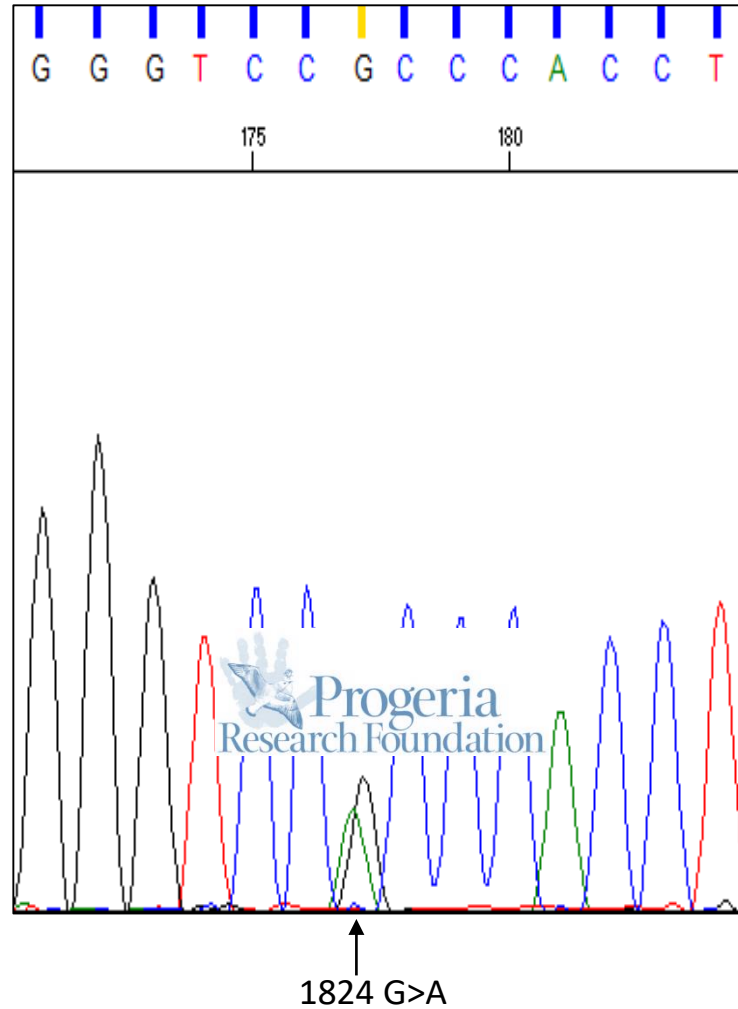
LMNA Exon 11, heterozygous c.1824 C>T (p.Gly608Gly)



Note: Reverse primer was used for sequencing, so complement strand is shown

HGADFN178

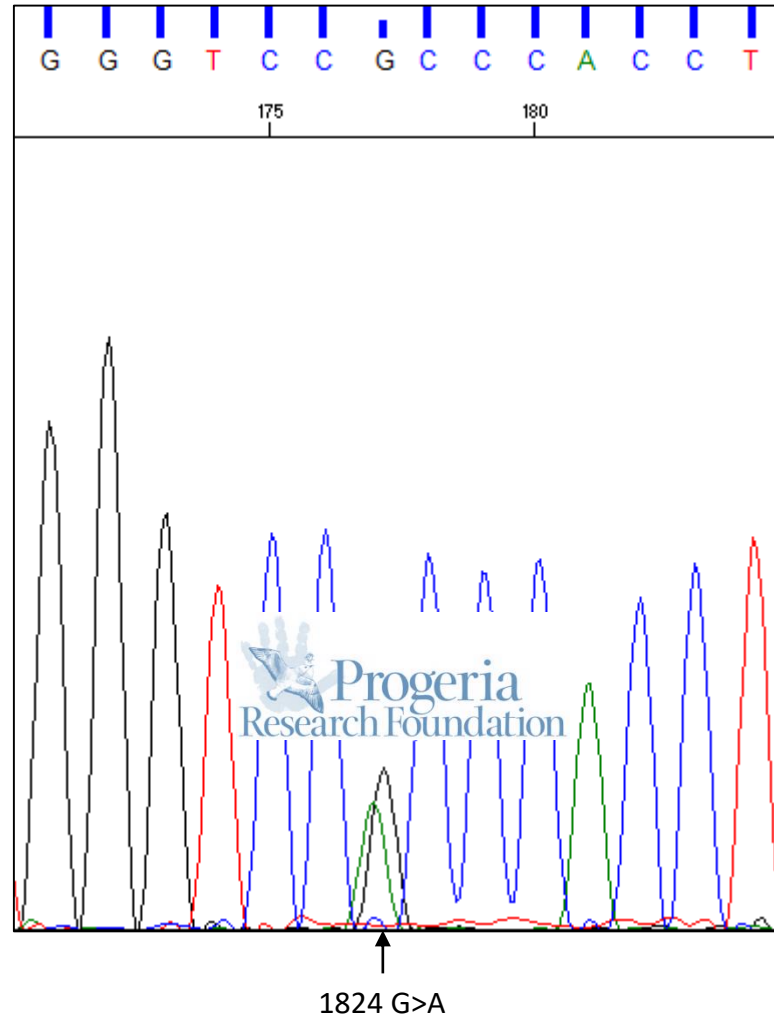
LMNA Exon 11, heterozygous c.1824 C>T (p.Gly608Gly)



Note: Reverse primer was used for sequencing, so complement strand is shown

HGADFN188

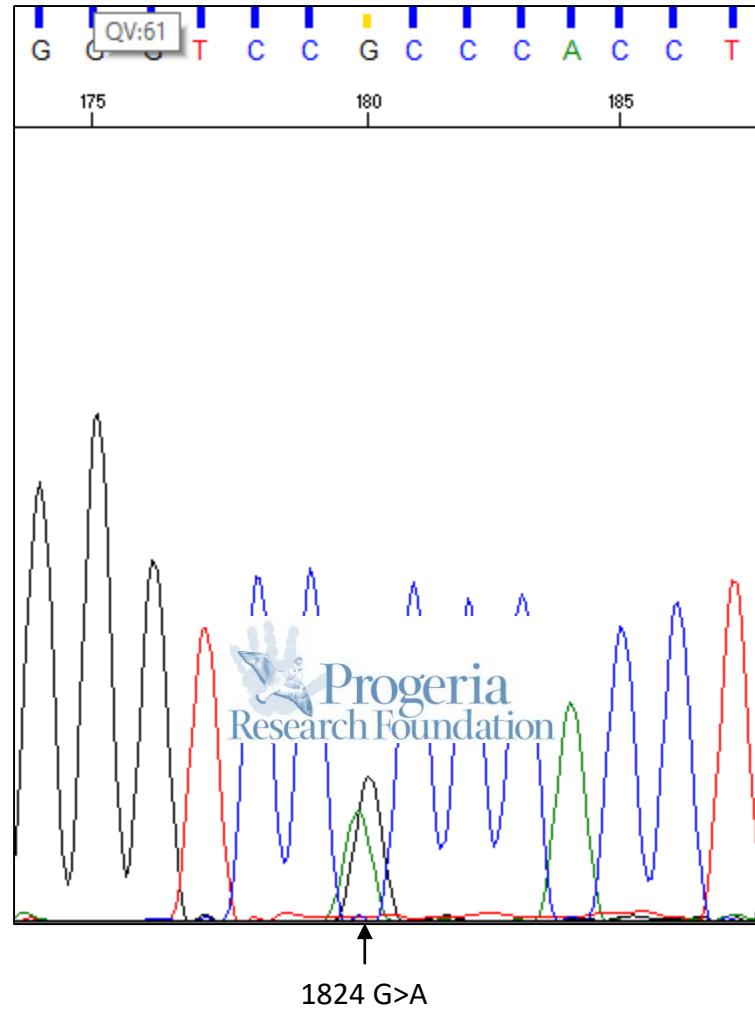
LMNA Exon 11, heterozygous c.1824 C>T (p.Gly608Gly)



Note: Reverse primer was used for sequencing, so complement strand is shown

HGADFN271

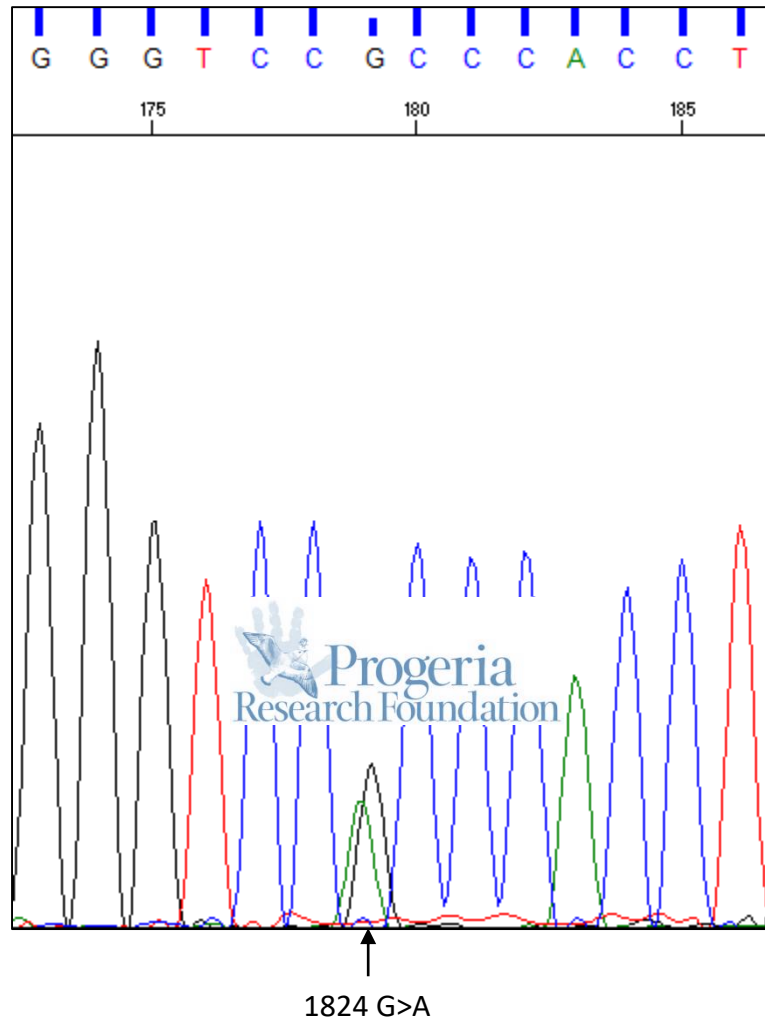
LMNA Exon 11, heterozygous c.1824 C>T (p.Gly608Gly)



Note: Reverse primer was used for sequencing, so complement strand is shown

HGADFN367

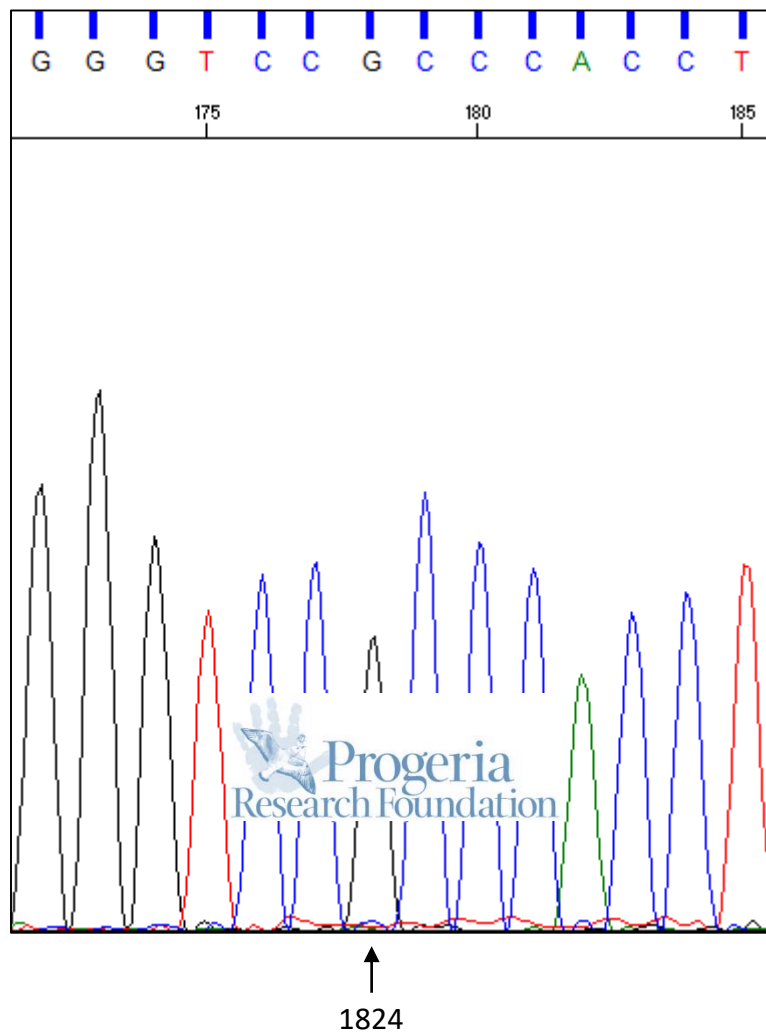
LMNA Exon 11, heterozygous c.1824 C>T (p.Gly608Gly)



Note: Reverse primer was used for sequencing, so complement strand is shown

HGMDFN368

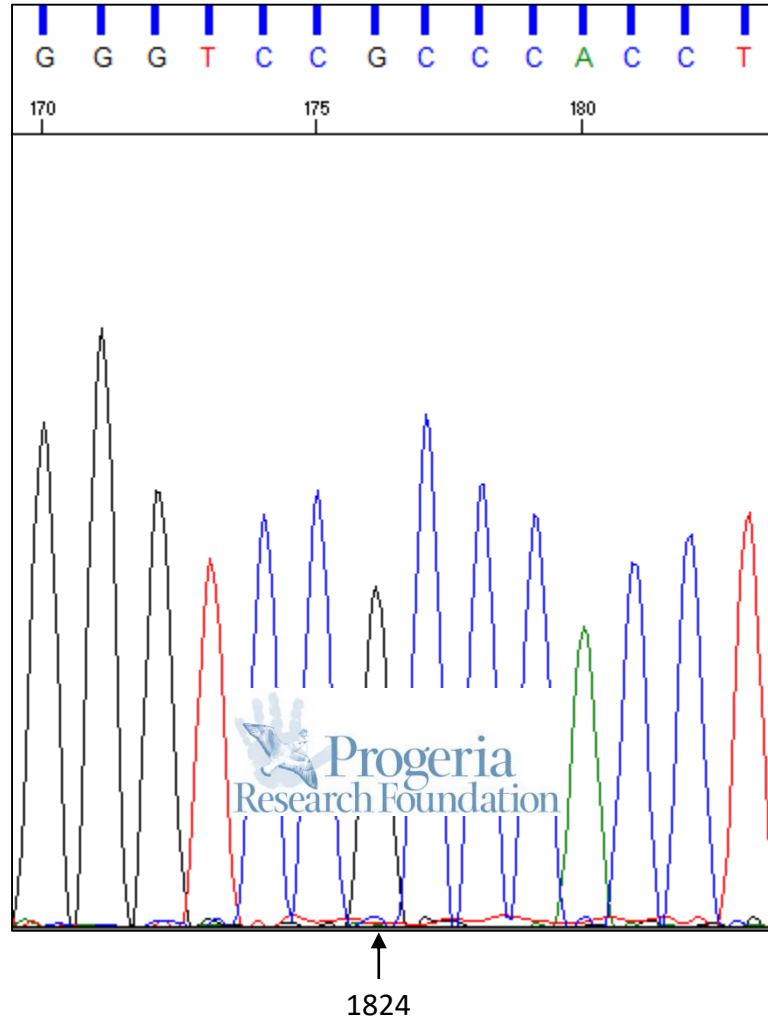
LMNA Exon 11, normal



Note: Reverse primer was used for sequencing, so complement strand is shown

HGFDFN369

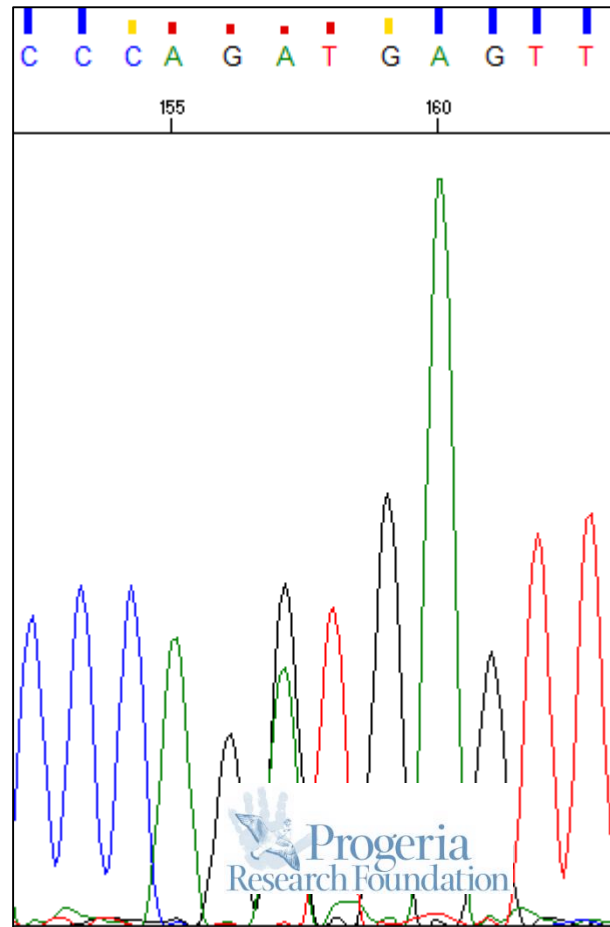
LMNA Exon 11, normal



Note: Reverse primer was used for sequencing, so complement strand is shown

PSADFN086

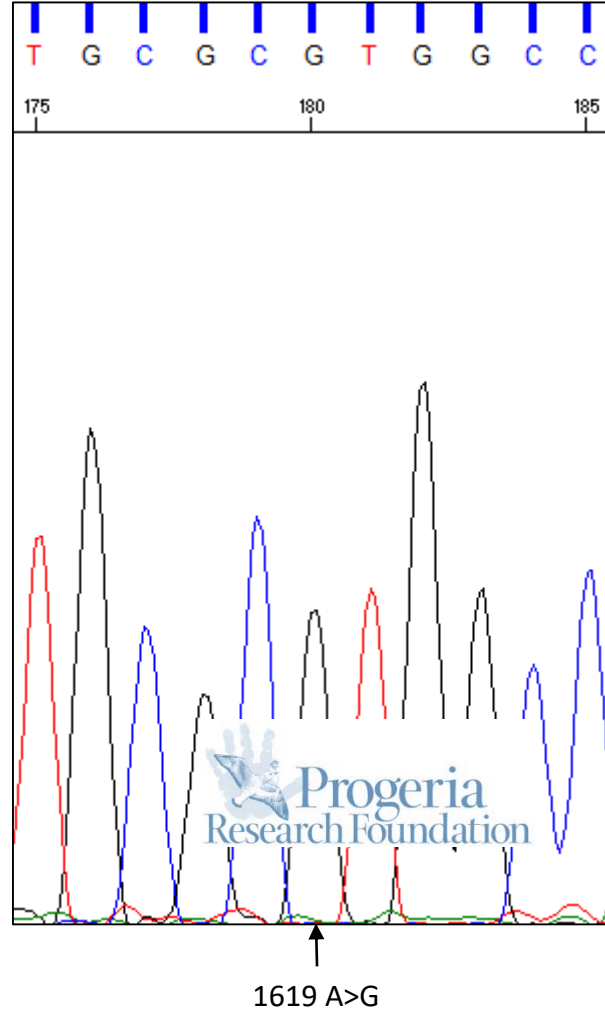
LMNA Exon 11, heterozygous c.1968+1 G>A



↑
1968+1 G>A

PSADFN257

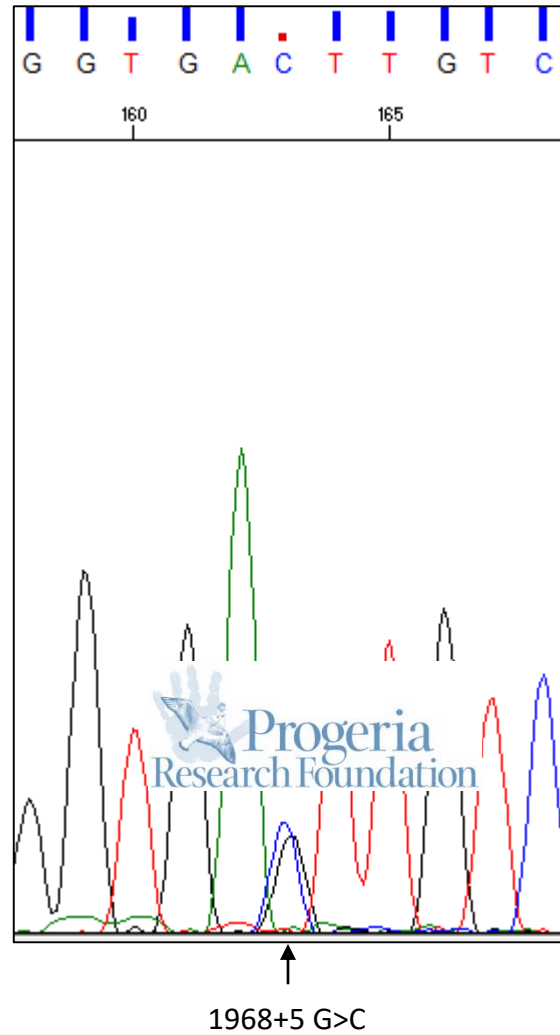
LMNA Exon 10, homozygous c.1619 T>C (p.Met540Thr)



Note: Reverse primer was used for sequencing, so complement strand is shown

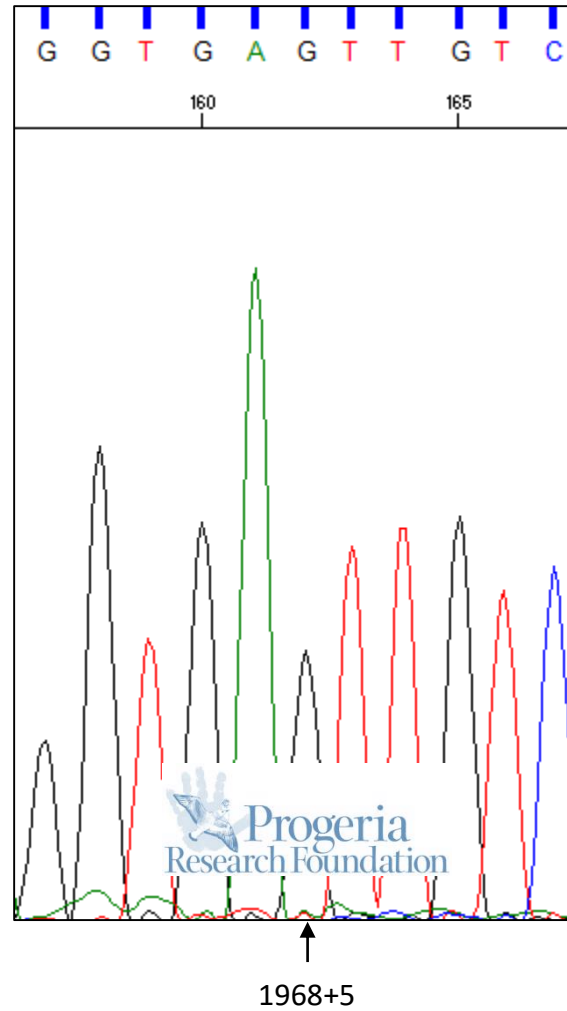
PSADFN325

LMNA Exon 11/Intron 11 junction, heterozygous c.1968+5 G>C



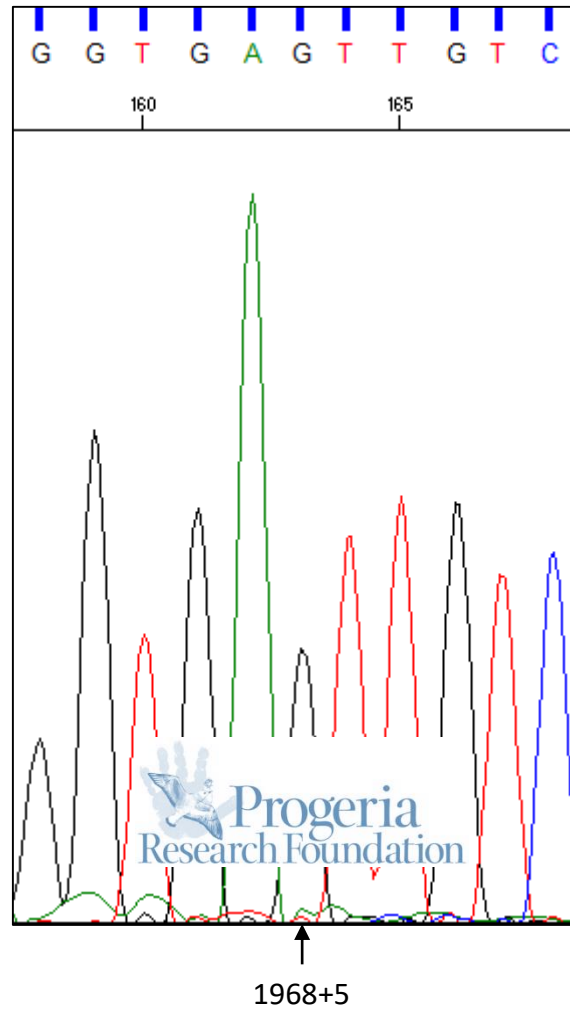
PSMDFN326

LMNA Exon 11/Intron 11 junction, normal



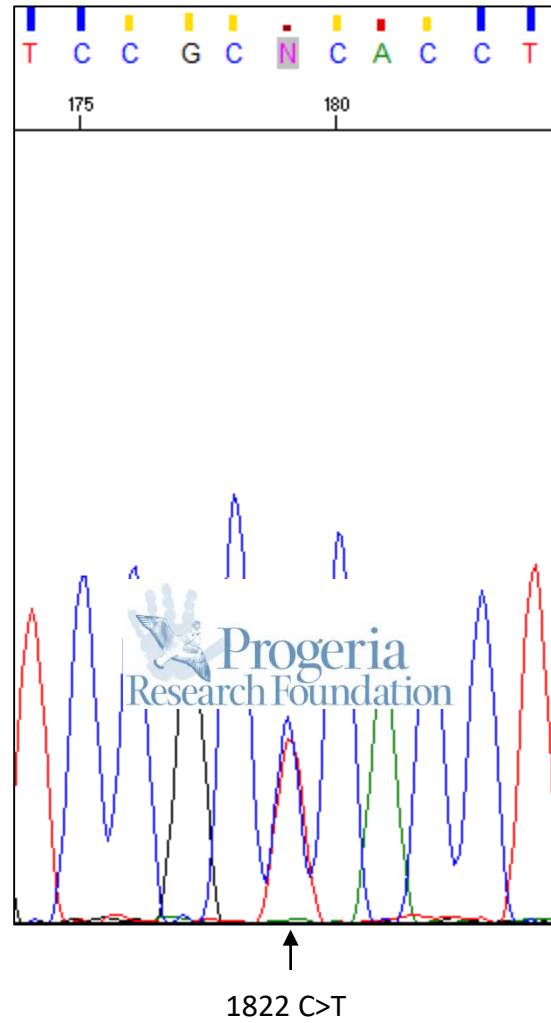
PSDFDN327

LMNA Exon 11/Intron 11 junction, normal



PSADFN328

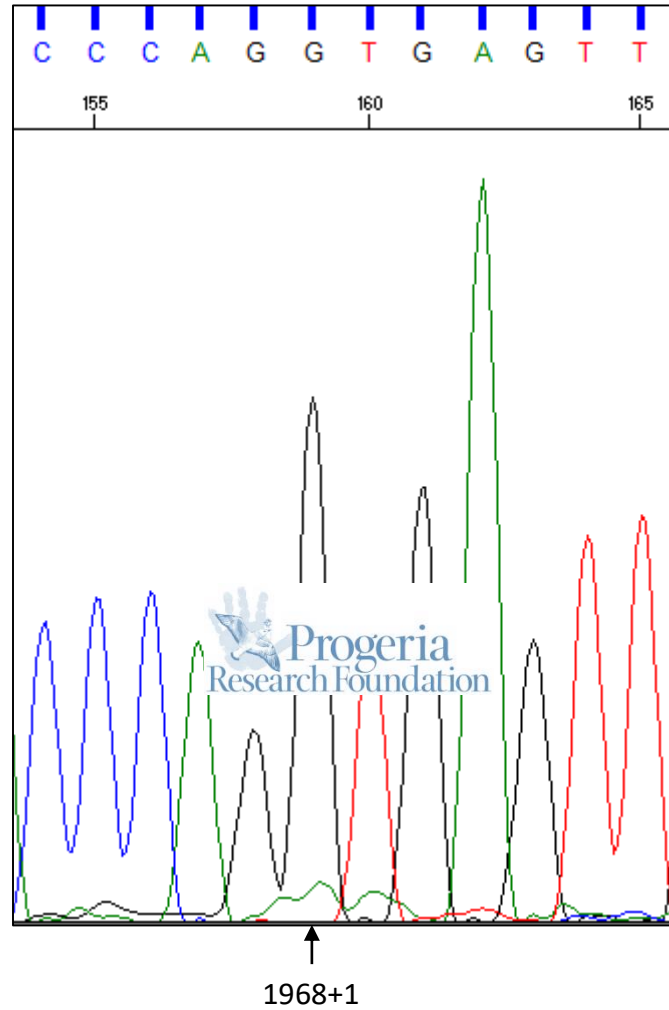
LMNA Exon 11, heterozygous c. 1822 G>A (p.Gly608Ser)



Note: Reverse primer was used for sequencing, so complement strand is shown

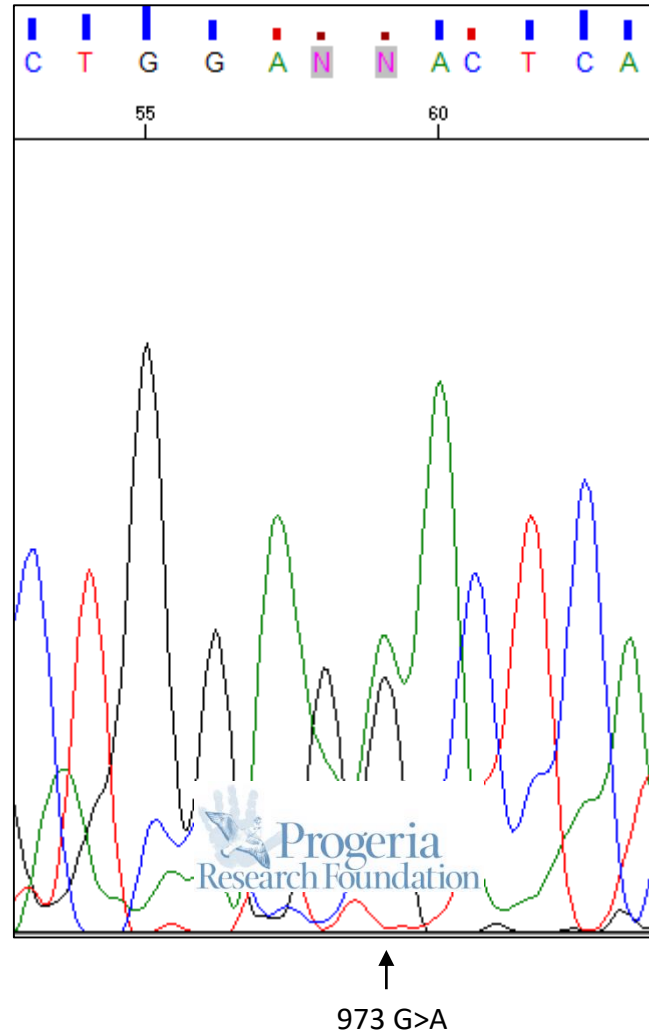
PSMDFN346

LMNA Exon 11, c.1968+1, normal



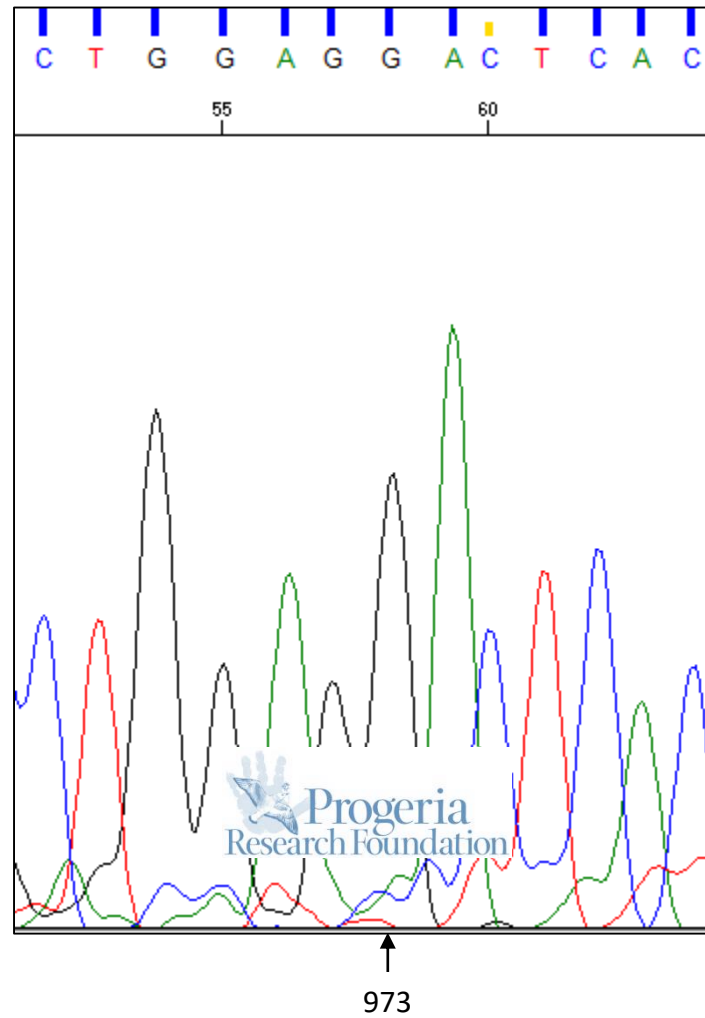
PSADFN363

LMNA Exon 6, heterozygous c. 973 G>A (p.Asp325Asn)



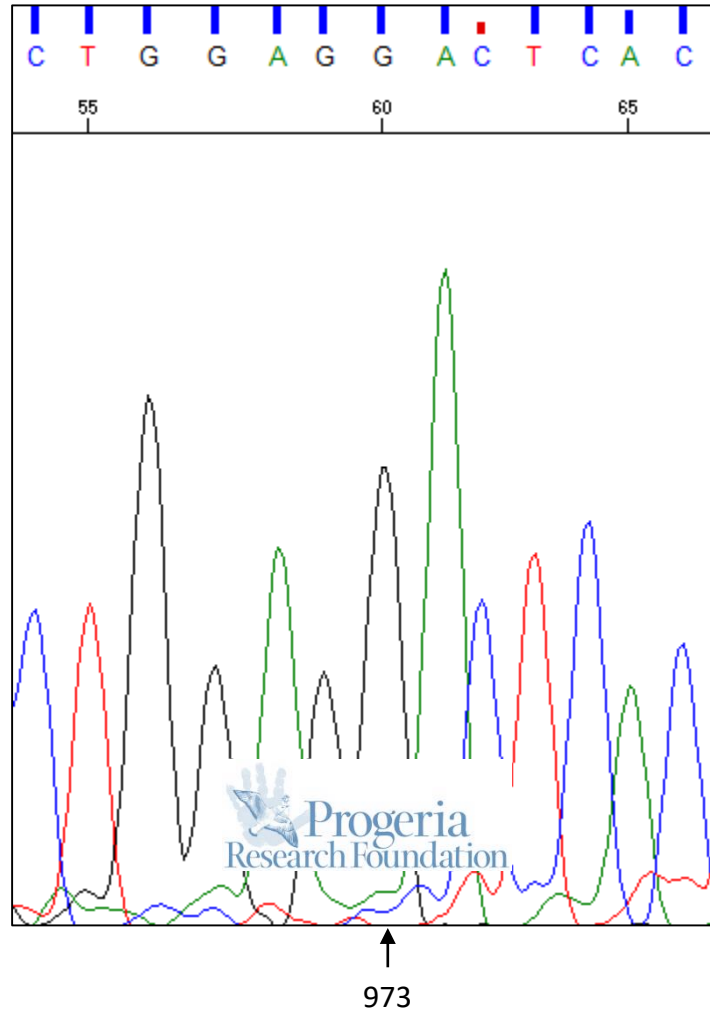
PSMDFN364

LMNA Exon 6, heterozygous c. 973, normal



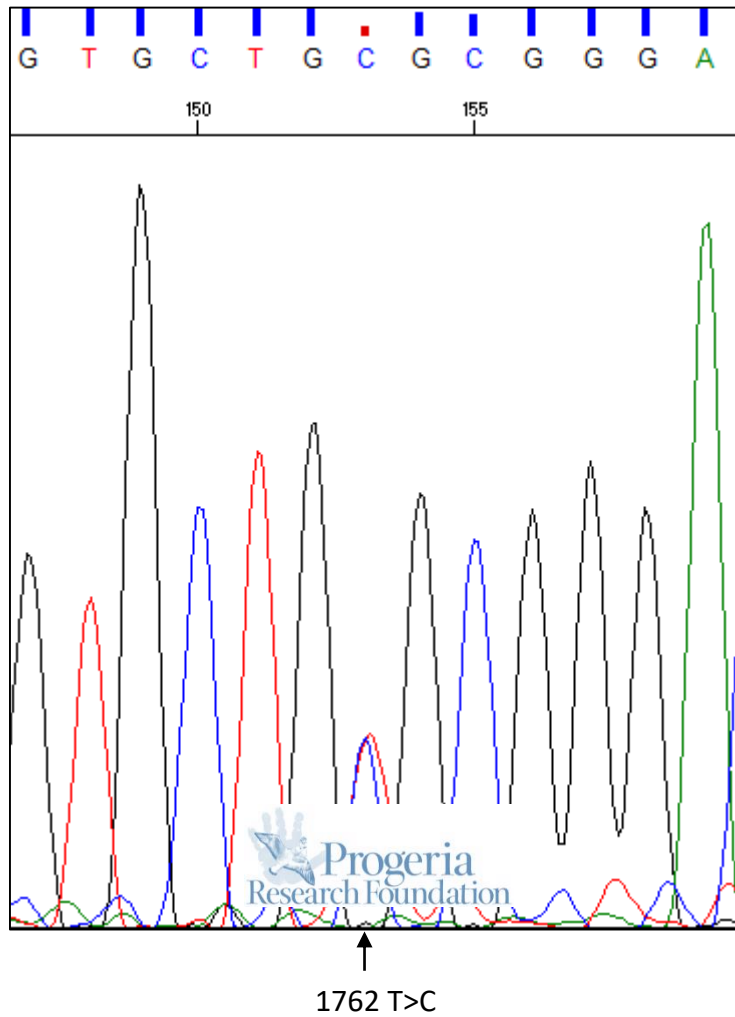
PSFDFN365

LMNA Exon 6, heterozygous c. 973, normal



PSADFN412

LMNA Exon 11, heterozygous c.1762T>C (p.C588R)



PSADFN414

LMNA Exon 11, heterozygous c.1762T>C (p.C588R)

