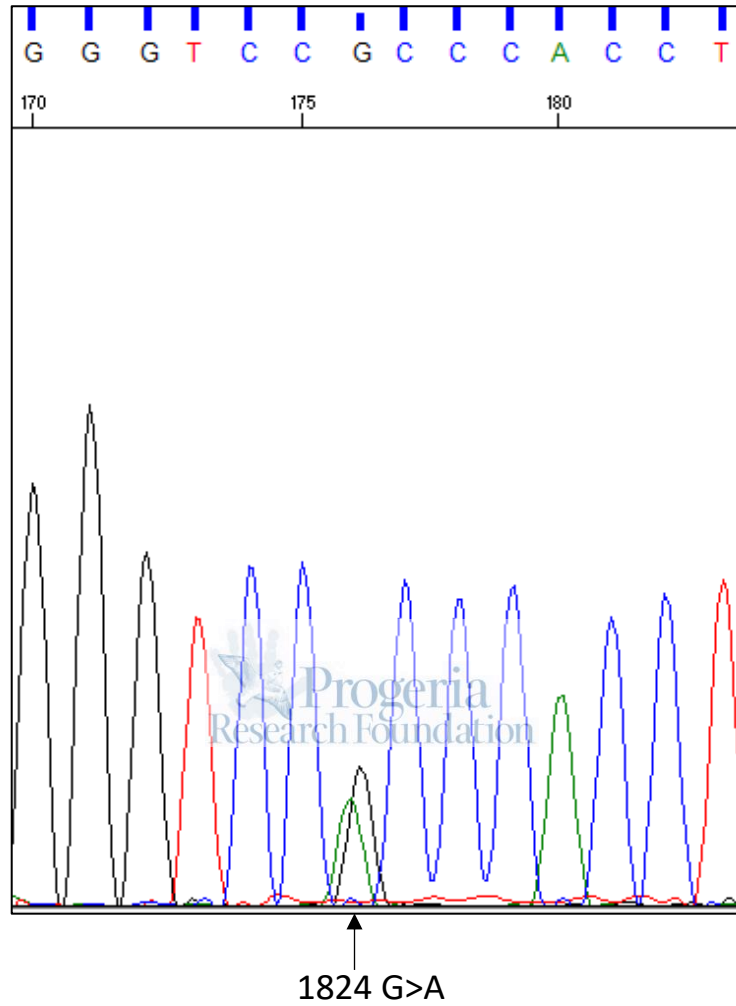


DNA isolation, PCR and mutational analysis were performed by the PRF Cell and Tissue Bank. Sequencing was performed by the Rhode Island Genomics Sequencing Core (RIGSC), and was conducted at a Rhode Island NSF EPSCoR research facility, the Genomics and Sequencing Center, supported in part by the National Science Foundation EPSCoR Cooperative Agreement #EPS-1004057.

HGADFN003

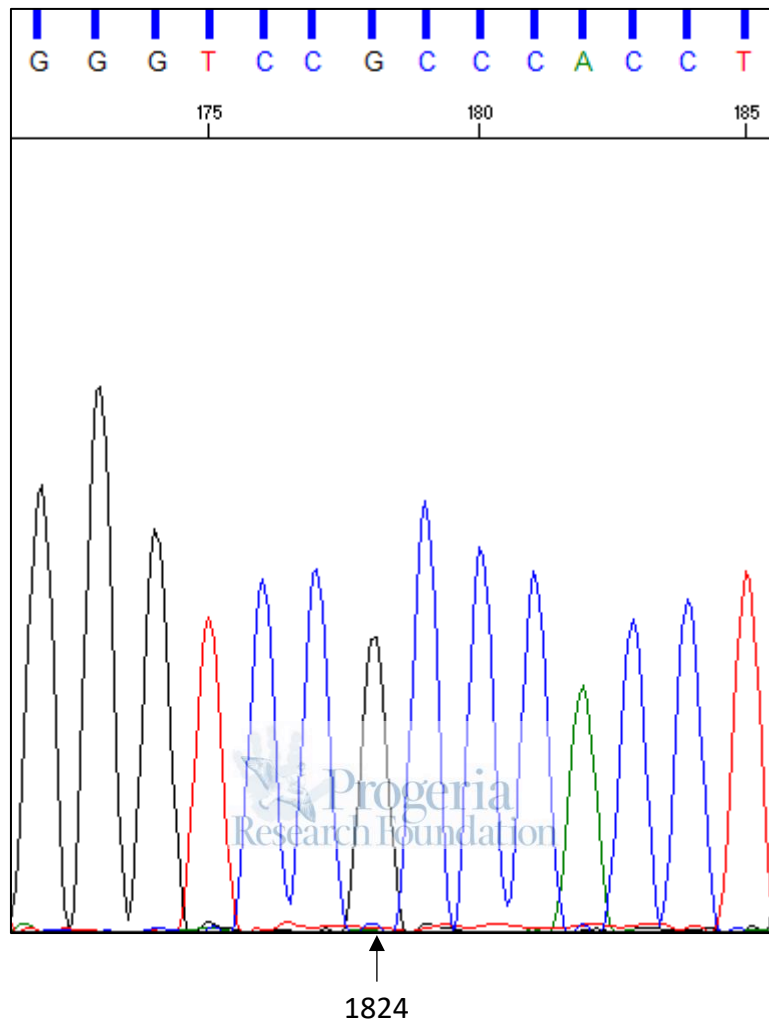
LMNA Exon 11, heterozygous c.1824 C>T (p.Gly608Gly)



Note: Reverse primer was used for sequencing, so complement strand is shown

HGMDFN090

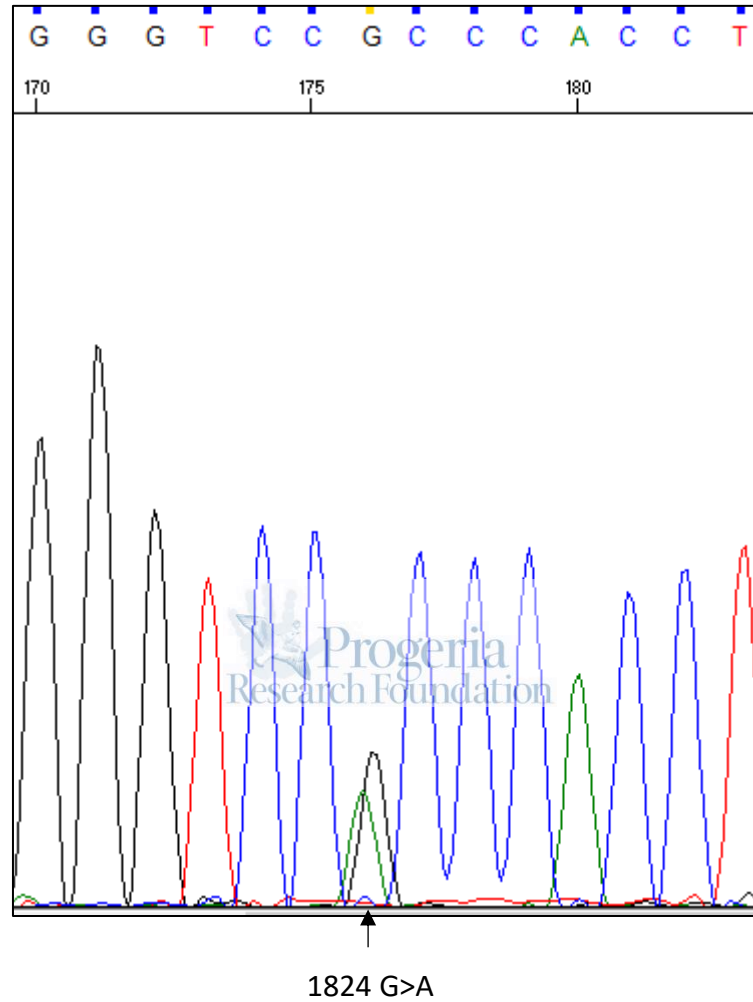
LMNA Exon 11, normal



Note: Reverse primer was used for sequencing, so complement strand is shown

HGADFN122

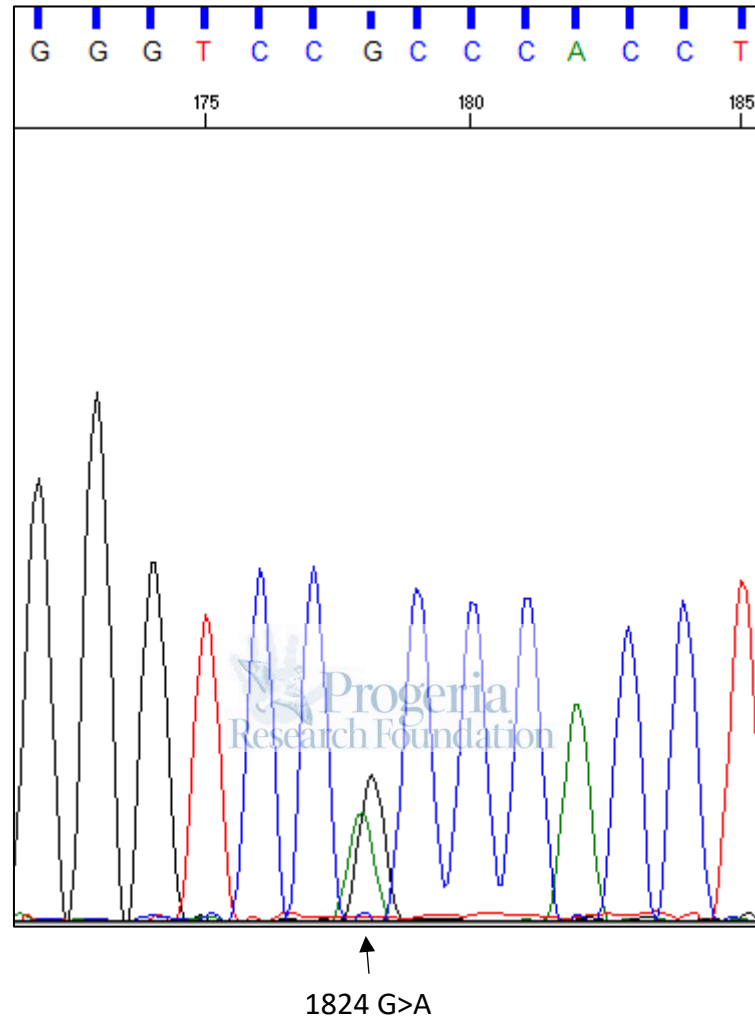
LMNA Exon 11, heterozygous c.1824 C>T (p.Gly608Gly)



Note: Reverse primer was used for sequencing, so complement strand is shown

HGADFN127

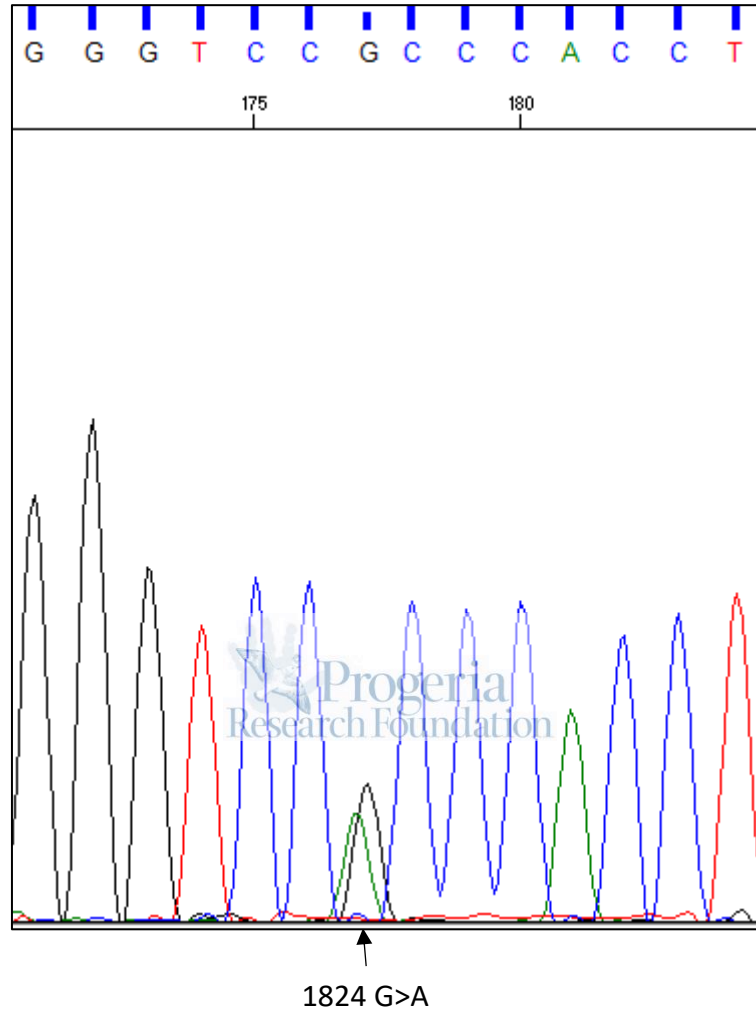
LMNA Exon 11, heterozygous c.1824 C>T (p.Gly608Gly)



Note: Reverse primer was used for sequencing, so complement strand is shown

HGADFN143

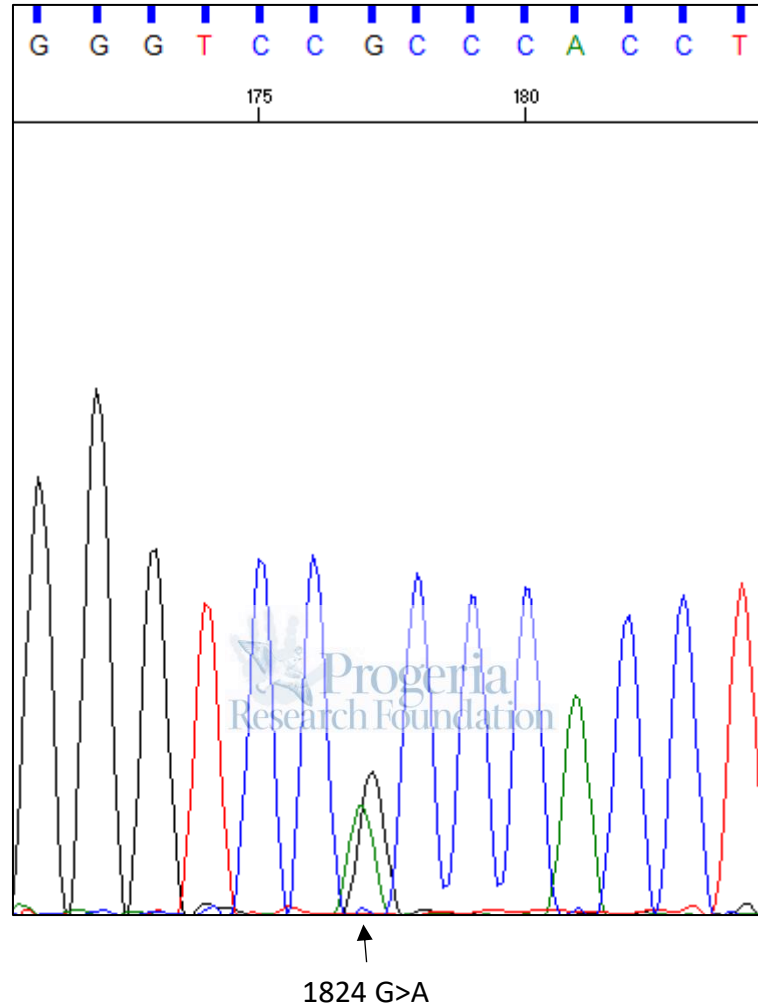
LMNA Exon 11, heterozygous c.1824 C>T (p.Gly608Gly)



Note: Reverse primer was used for sequencing, so complement strand is shown

HGADFN155

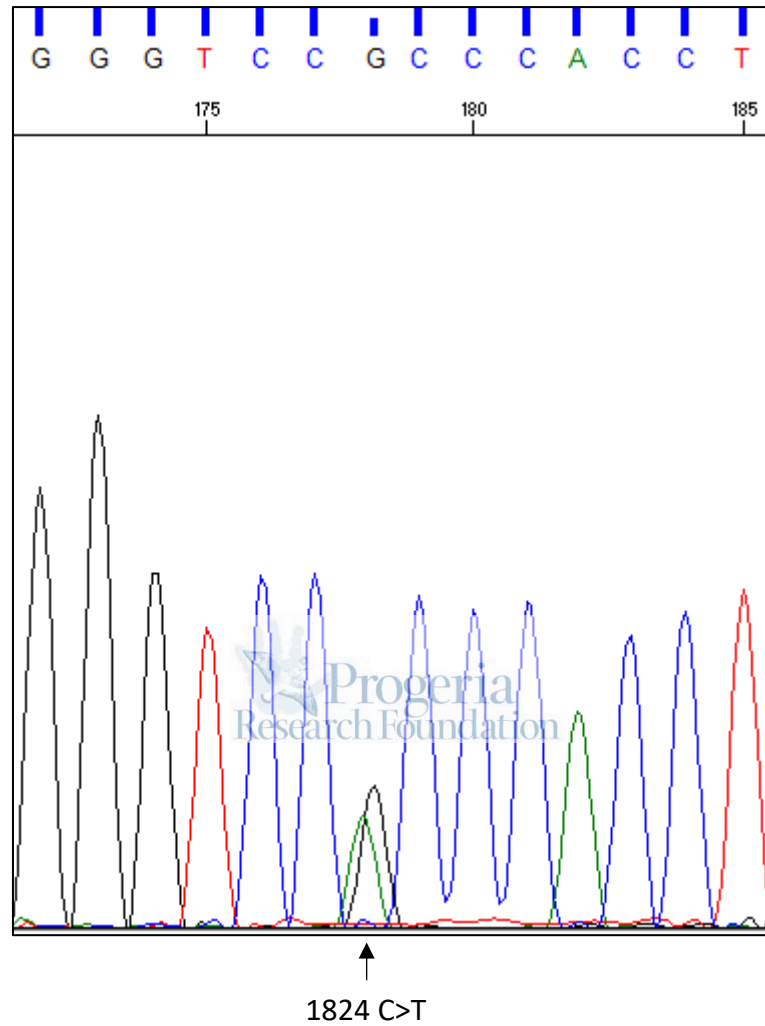
LMNA Exon 11, heterozygous c.1824 C>T (p.Gly608Gly)



Note: Reverse primer was used for sequencing, so complement strand is shown

HGADFN164

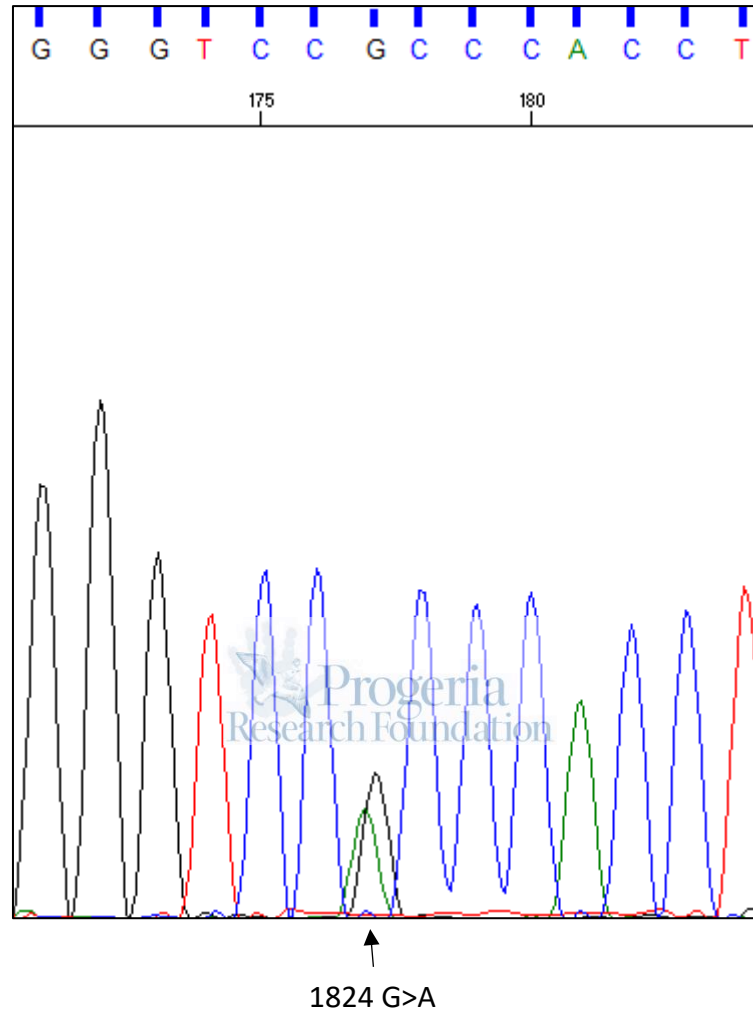
LMNA Exon 11, heterozygous c.1824 C>T (p.Gly608Gly)



Note: Reverse primer was used for sequencing, so complement strand is shown

HGADFN167

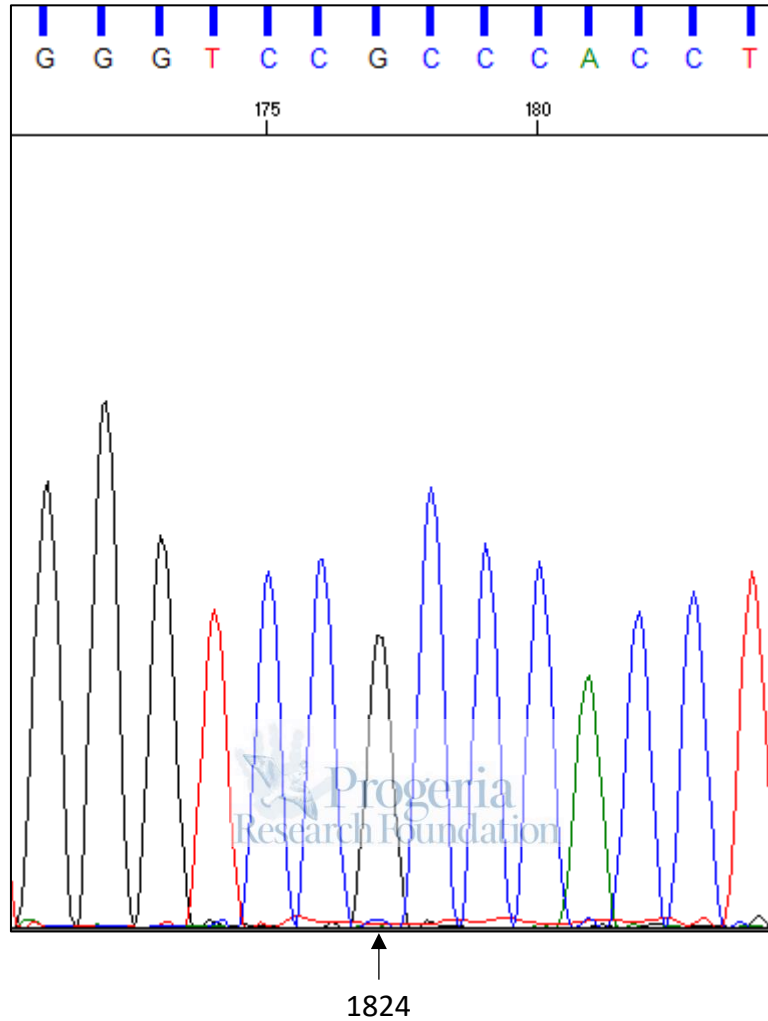
LMNA Exon 11, heterozygous c.1824 C>T (p.Gly608Gly)



Note: Reverse primer was used for sequencing, so complement strand is shown

HGFDFN168

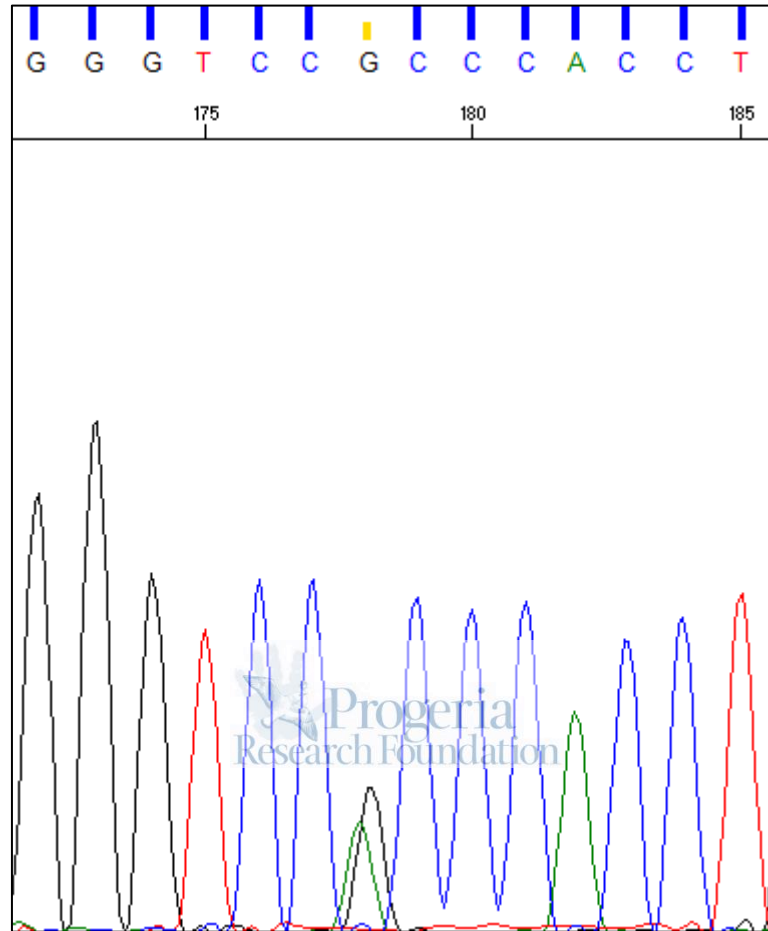
LMNA Exon 11, normal



Note: Reverse primer was used for sequencing, so complement strand is shown

HGADFN169

LMNA Exon 11, heterozygous c.1824 C>T (p.Gly608Gly)

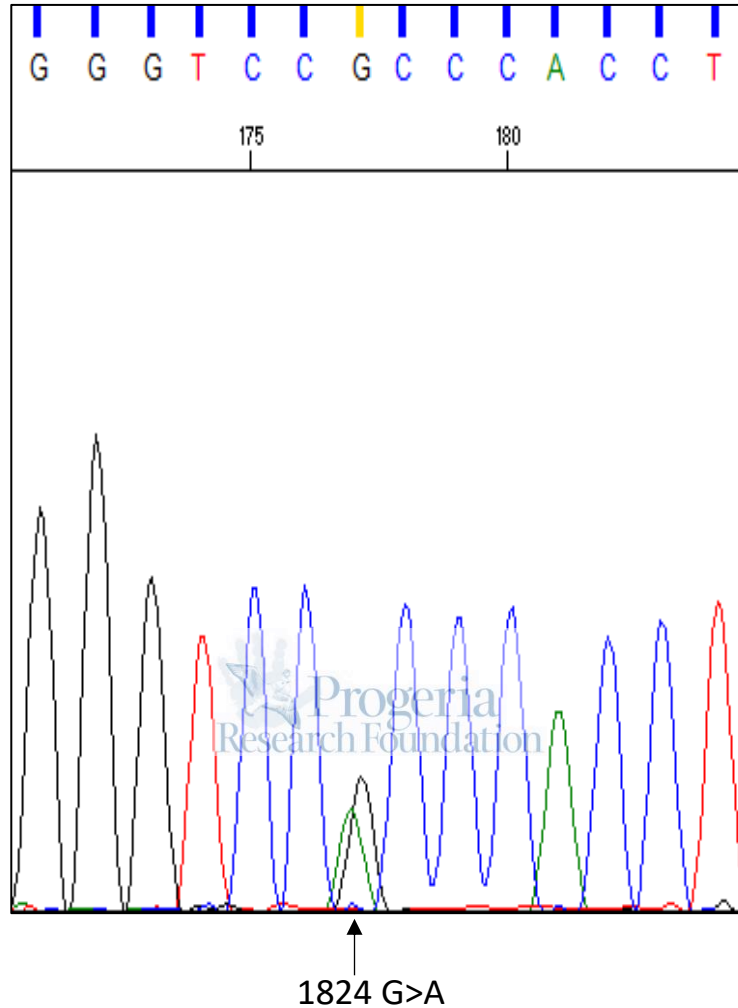


1824 G>A

Note: Reverse primer was used for sequencing, so complement strand is shown

HGADFN178

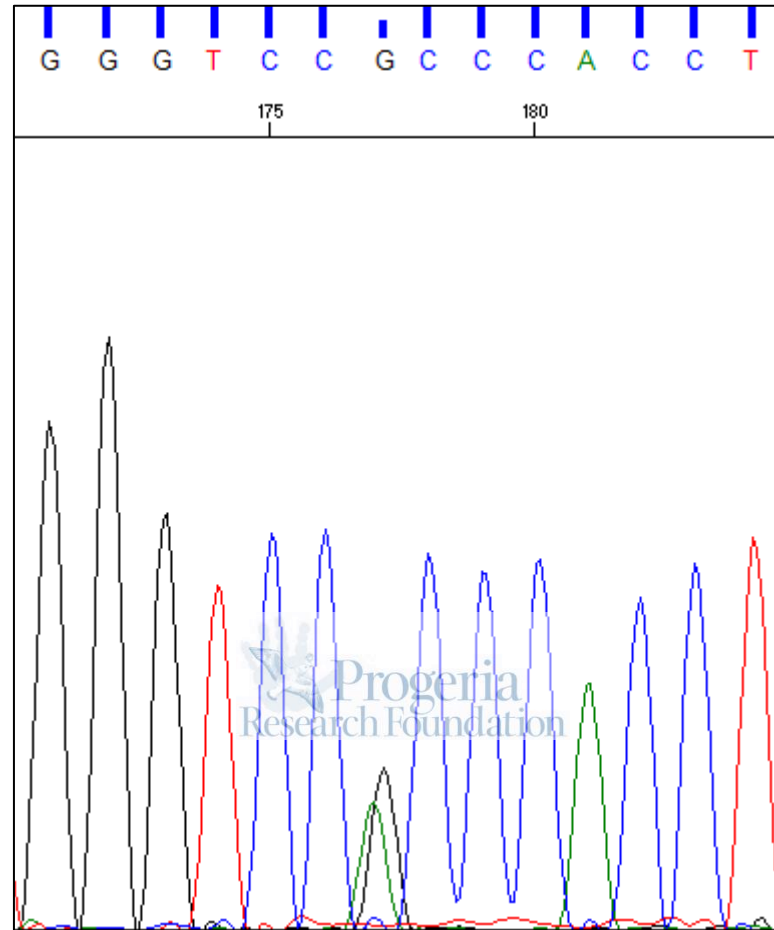
LMNA Exon 11, heterozygous c.1824 C>T (p.Gly608Gly)



Note: Reverse primer was used for sequencing, so complement strand is shown

HGADFN188

LMNA Exon 11, heterozygous c.1824 C>T (p.Gly608Gly)

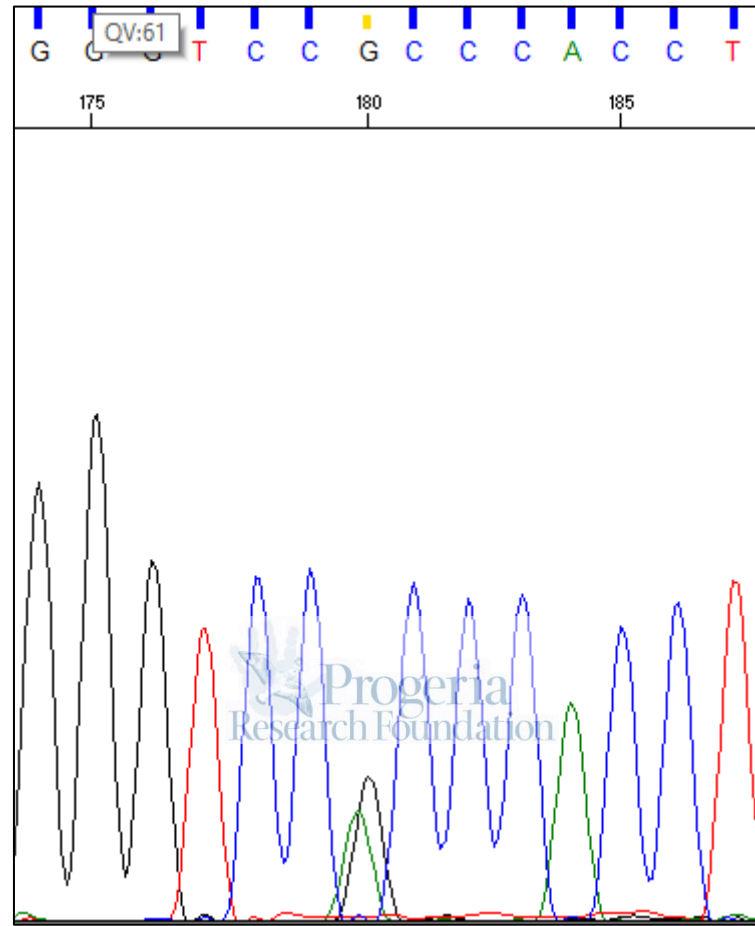


1824 G>A

Note: Reverse primer was used for sequencing, so complement strand is shown

HGADFN271

LMNA Exon 11, heterozygous c.1824 C>T (p.Gly608Gly)

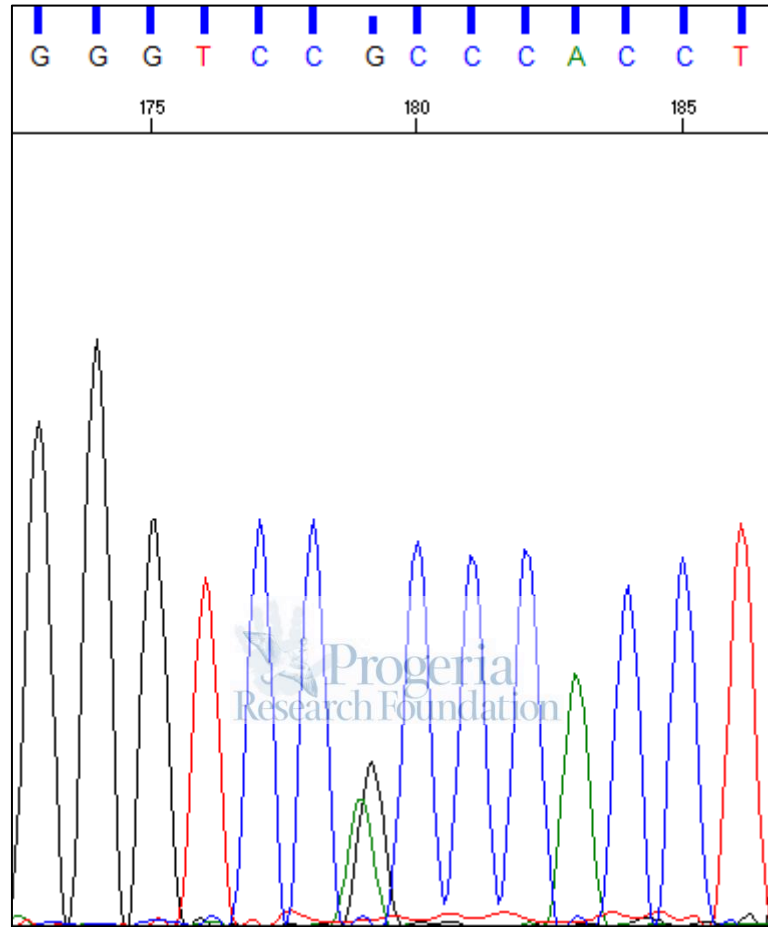


1824 G>A

Note: Reverse primer was used for sequencing, so complement strand is shown

HGADFN367

LMNA Exon 11, heterozygous c.1824 C>T (p.Gly608Gly)

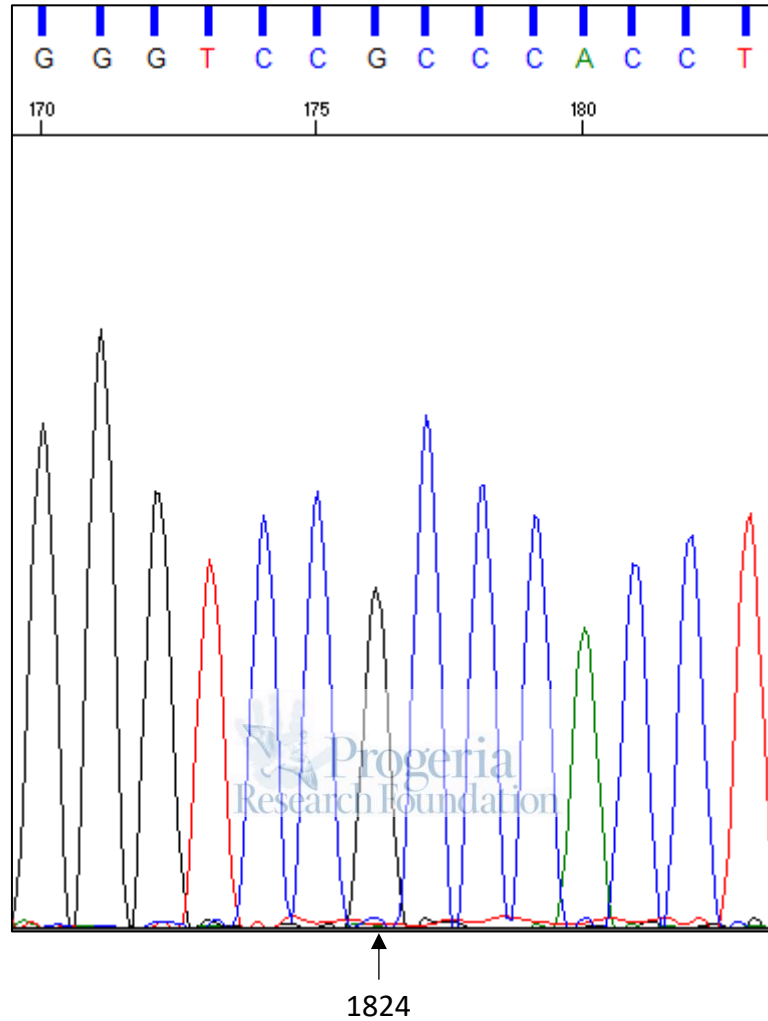


1824 G>A

Note: Reverse primer was used for sequencing, so complement strand is shown

HGFDFN369

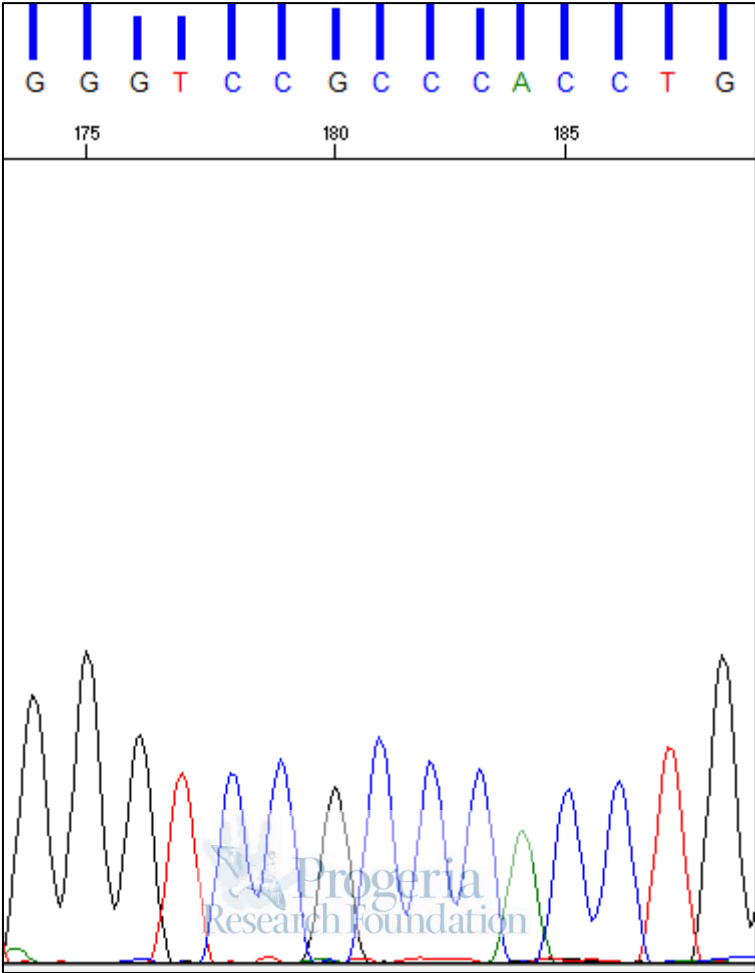
LMNA Exon 11, normal



Note: Reverse primer was used for sequencing, so complement strand is shown

HGMDFN717

LMNA Exon 11, normal

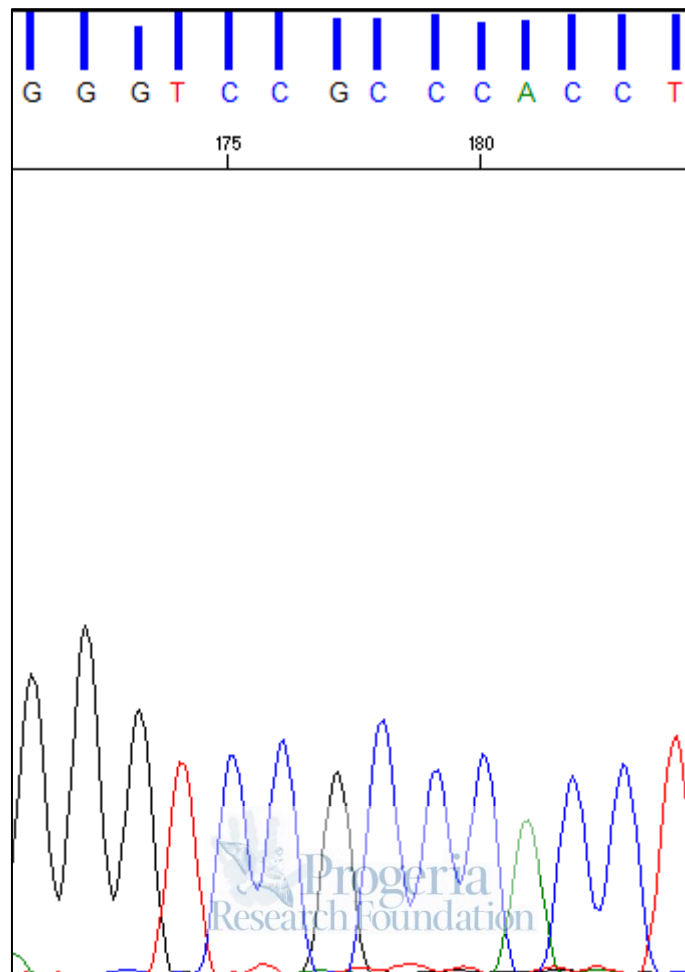


1824

Note: Reverse primer was used for sequencing, so complement strand is shown

HGMDFN718

LMNA Exon 11, normal

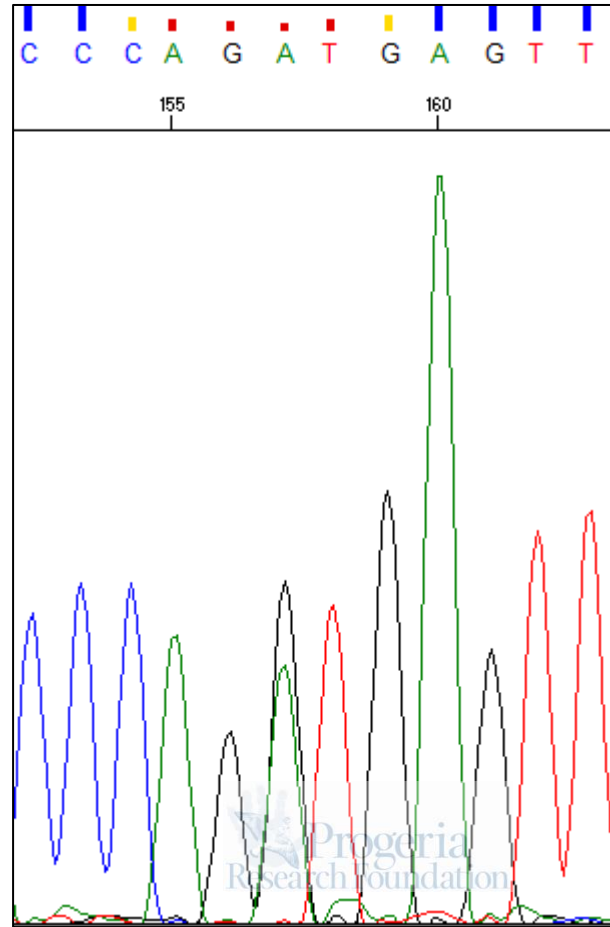


↑
1824

Note: Reverse primer was used for sequencing, so complement strand is shown

PSADFN086

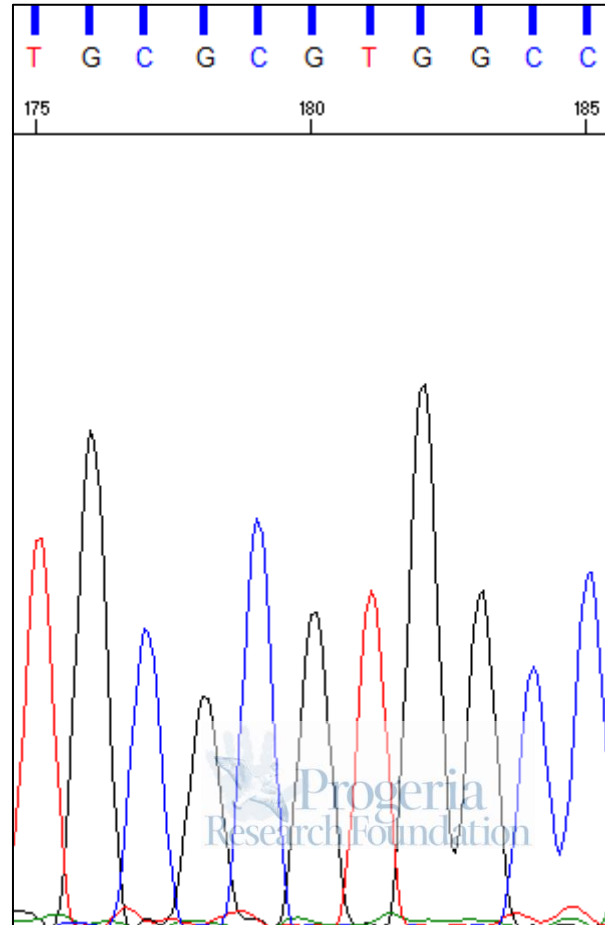
LMNA Exon 11, heterozygous c.1968+1 G>A



↑
1968+1 G>A

PSADFN257

LMNA Exon 10, homozygous c.1619 T>C (p.Met540Thr)

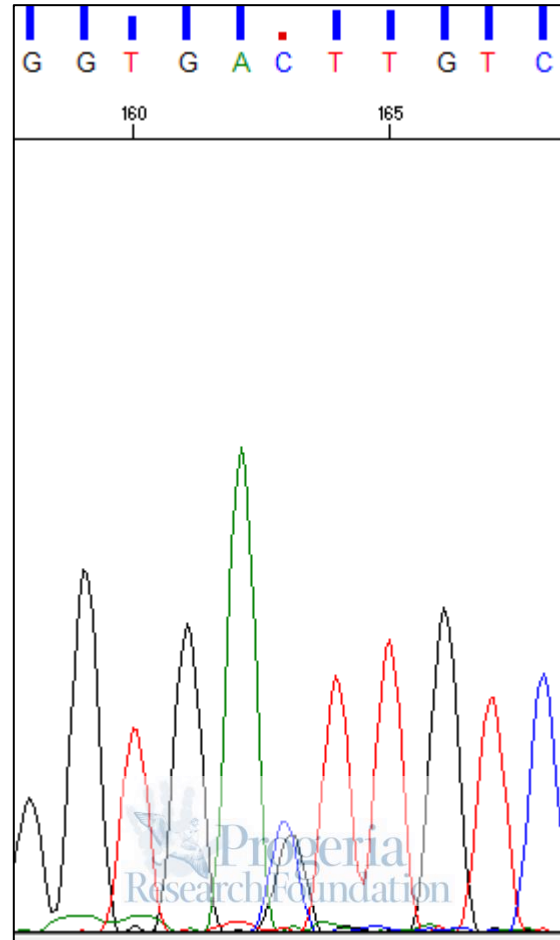


1619 A>G

Note: Reverse primer was used for sequencing, so complement strand is shown

PSADFN325

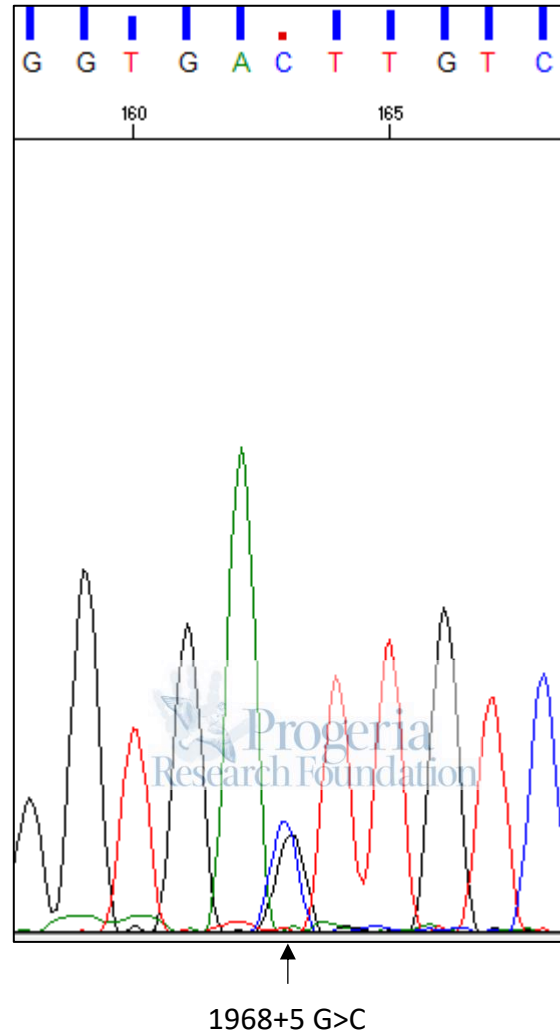
LMNA Exon 11/Intron 11 junction, heterozygous c.1968+5 G>C



↑
1968+5 G>C

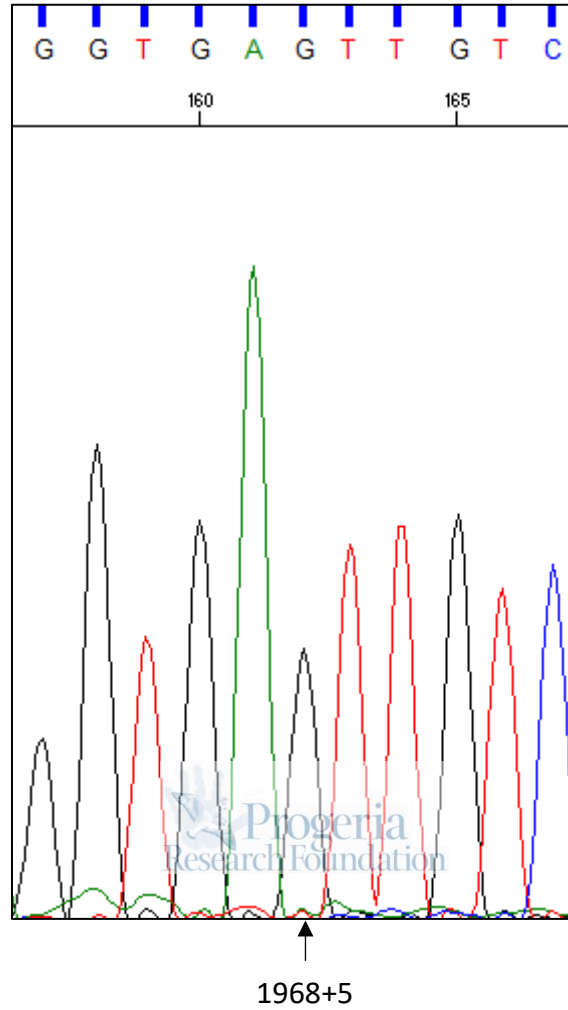
PSADFN325

LMNA Exon 11/Intron 11 junction, heterozygous c.1968+5 G>C



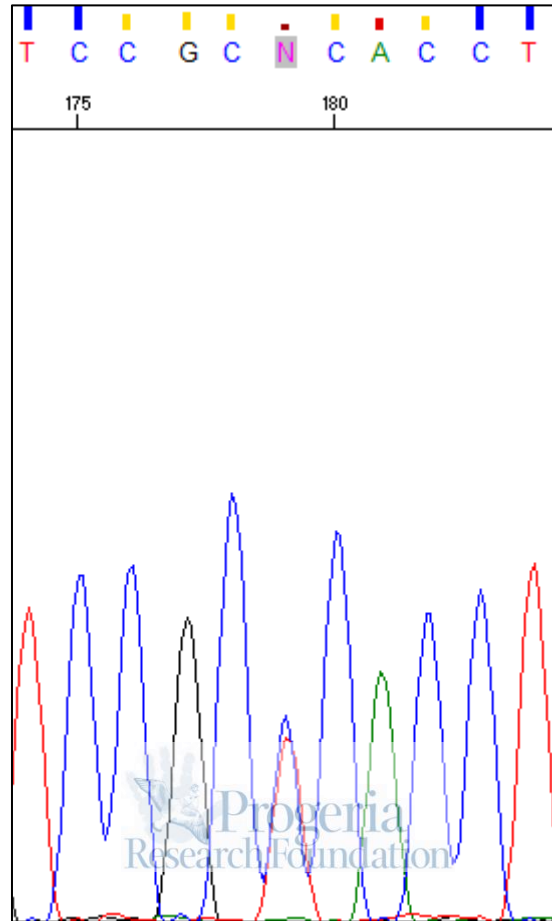
PSMDFN326

LMNA Exon 11/Intron 11 junction, normal



PSADFN328

LMNA Exon 11, heterozygous c. 1822 G>A (p.Gly608Ser)

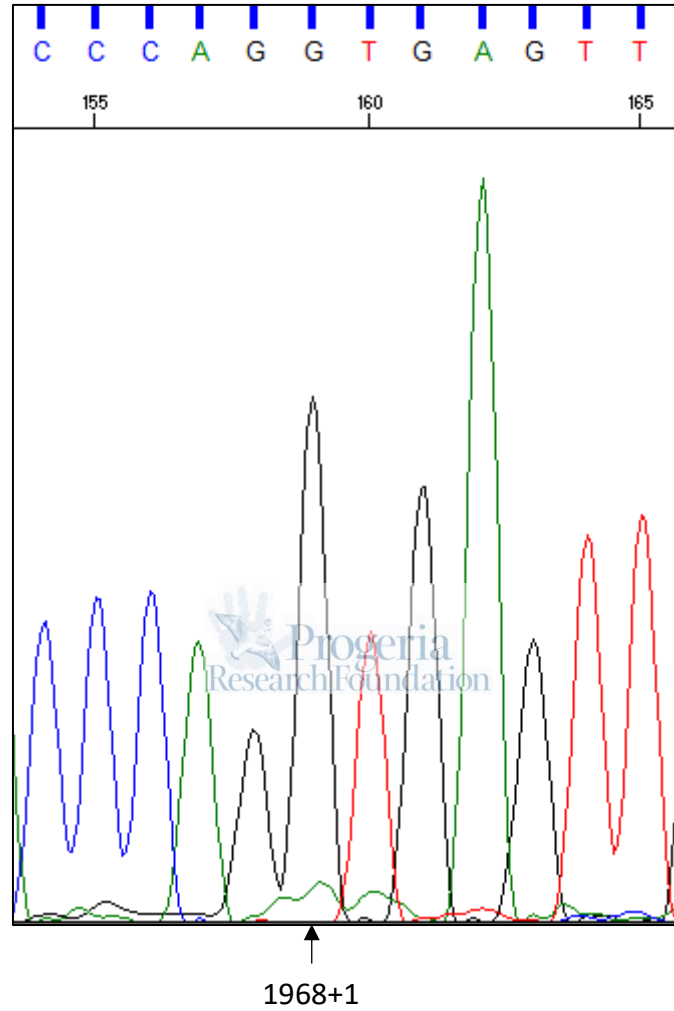


1822 C>T

Note: Reverse primer was used for sequencing, so complement strand is shown

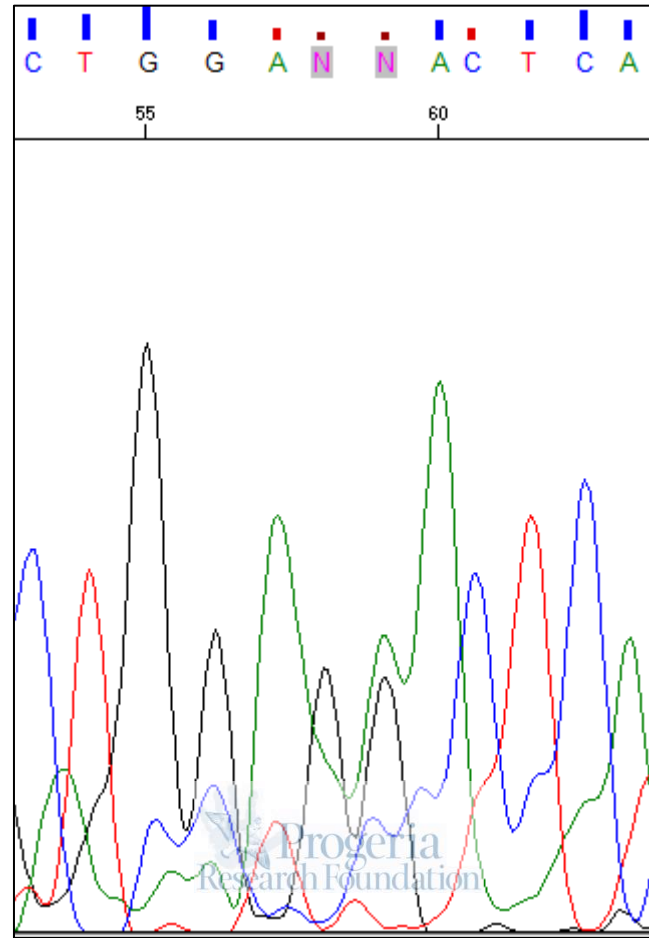
PSMDFN346

LMNA Exon 11, c.1968+1, normal



PSADFN363

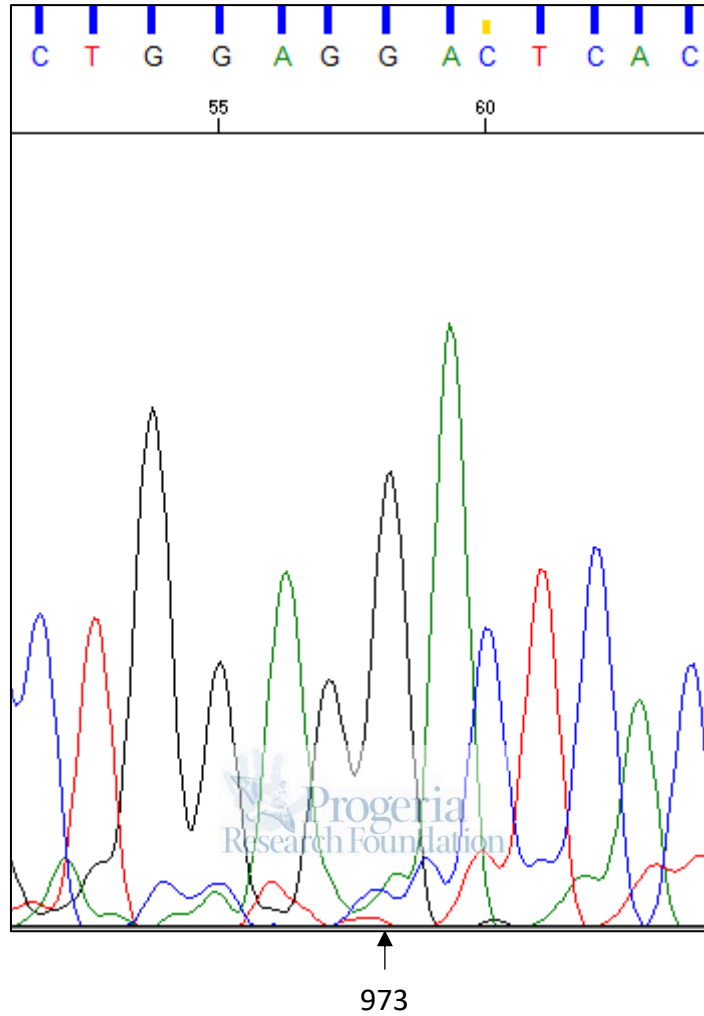
LMNA Exon 6, heterozygous c. 973 G>A (p.Asp325Asn)



↑
973 G>A

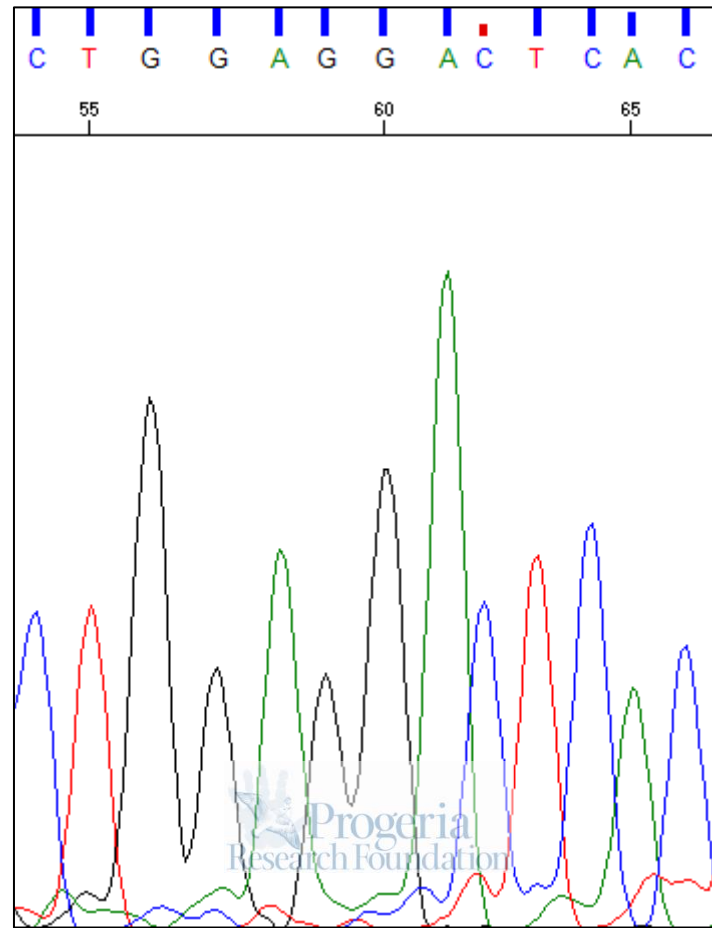
PSMDFN364

LMNA Exon 6, heterozygous c. 973, normal



PSFDFN365

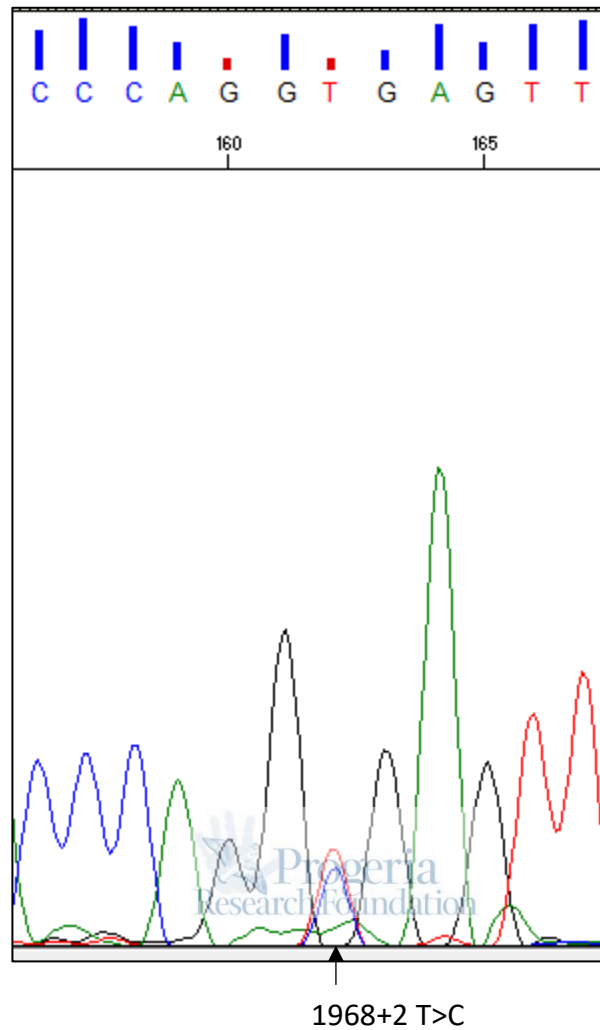
LMNA Exon 6, heterozygous c. 973, normal



973

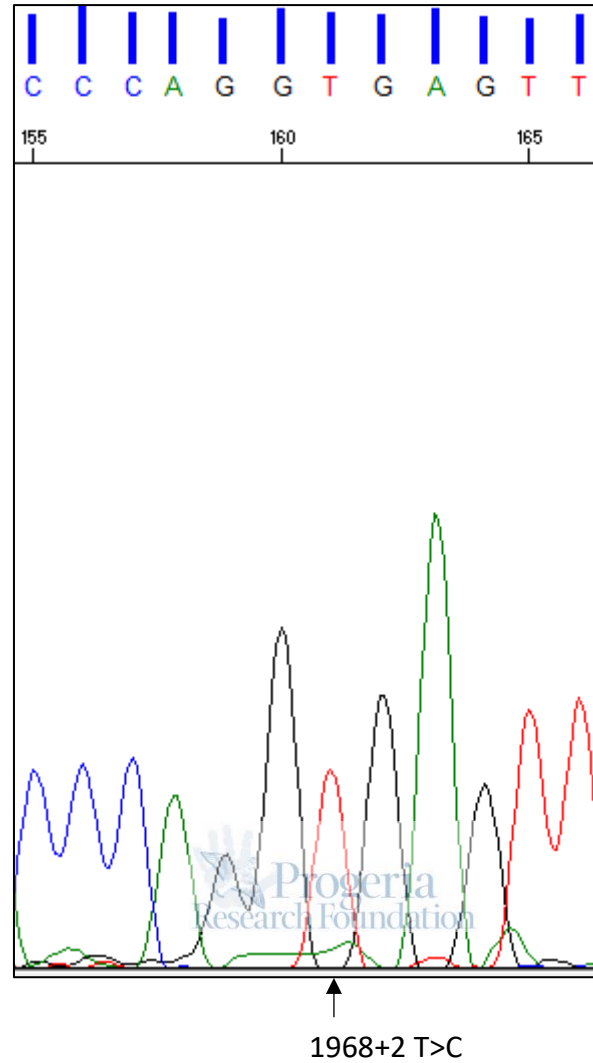
PSADFN392

LMNA Exon 11, heterozygous c.1968+2 T>C



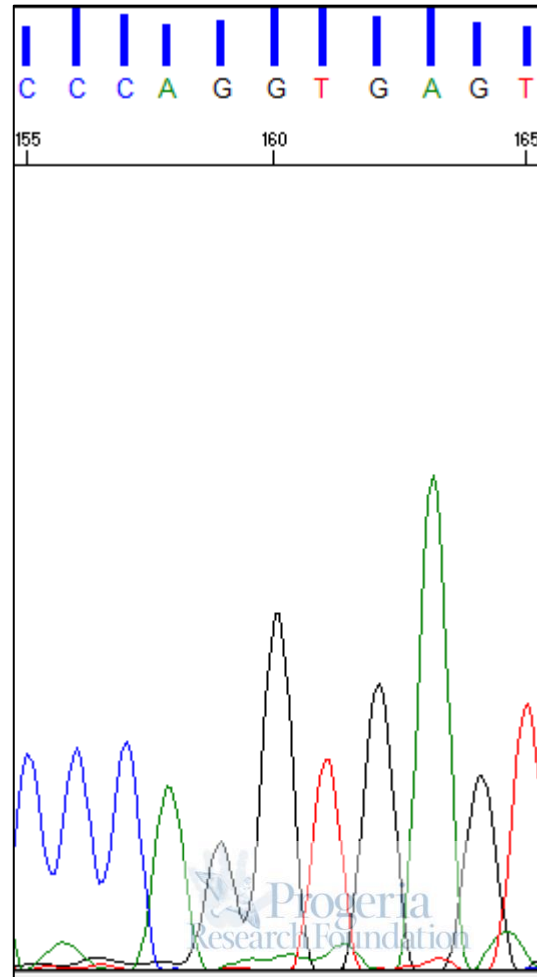
PSMDFN393

LMNA Exon 11, heterozygous c.1968+2 normal



PSFDFN394

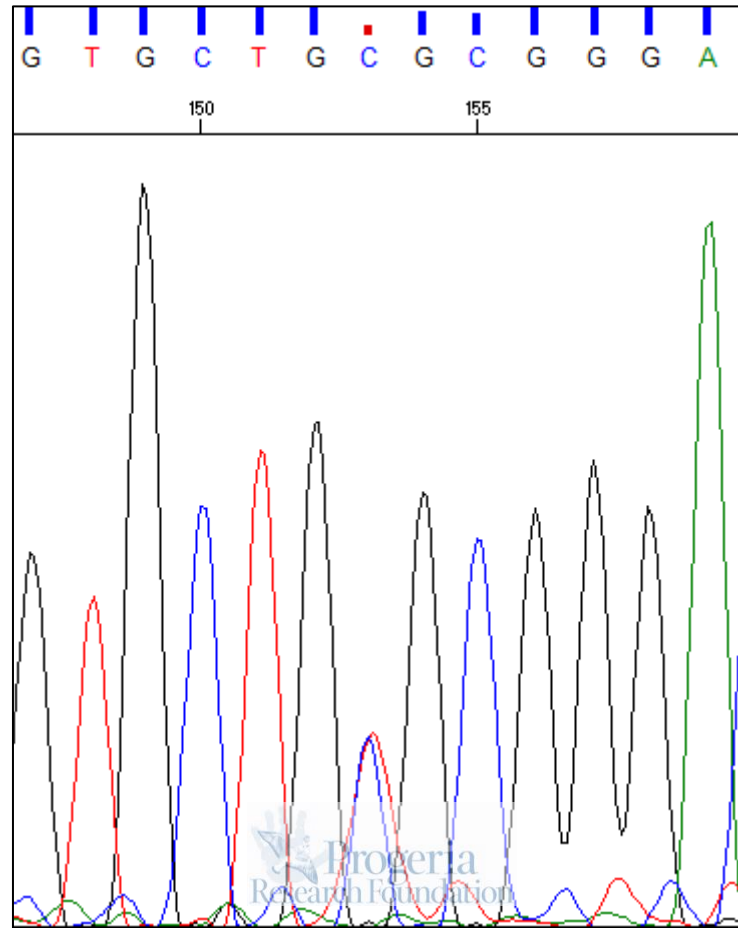
LMNA Exon 11, heterozygous c.1968+2 normal



↑
1968+2 T>C

PSADFN412

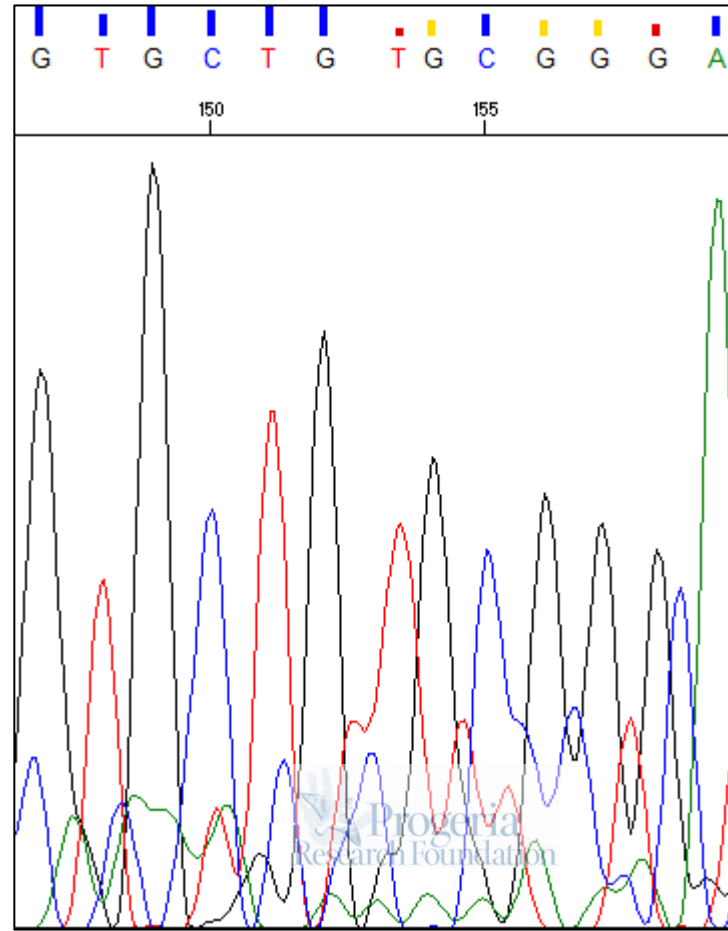
LMNA Exon 11, heterozygous c.1762T>C p.C588R



1762 T>C

PSADFN414

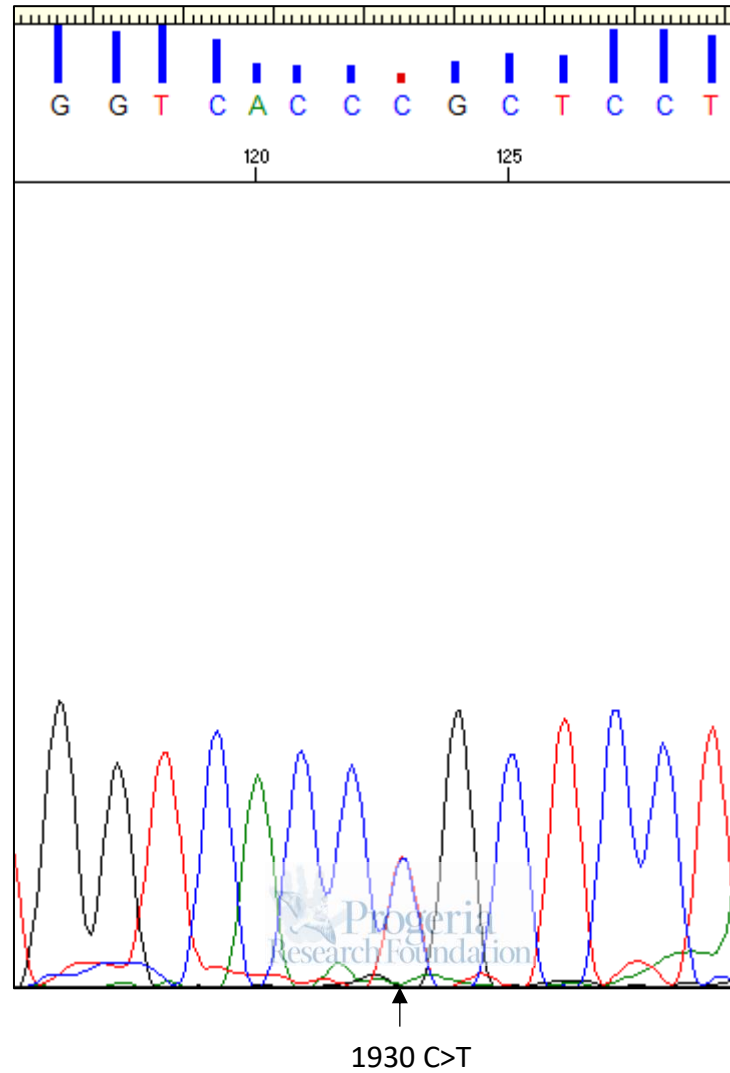
LMNA Exon 11, heterozygous c.1762T>C (p.C588R)



↑
1762 T>C

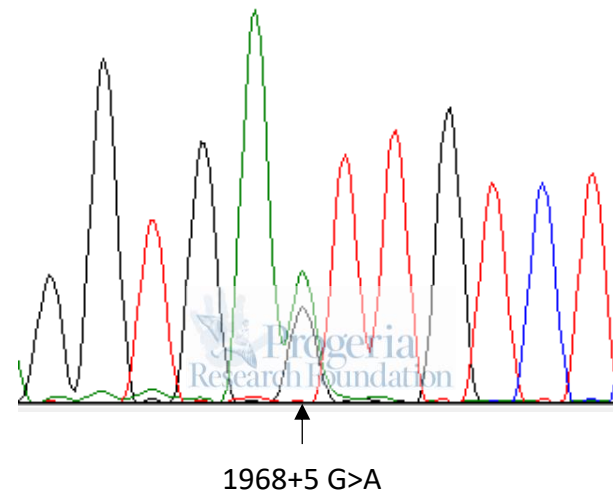
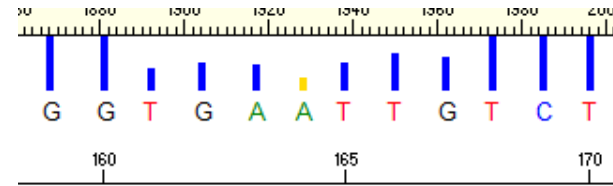
PSADFN542

LMNA Exon 11, heterozygous c.1930 C>T (p.Arg644Cys)



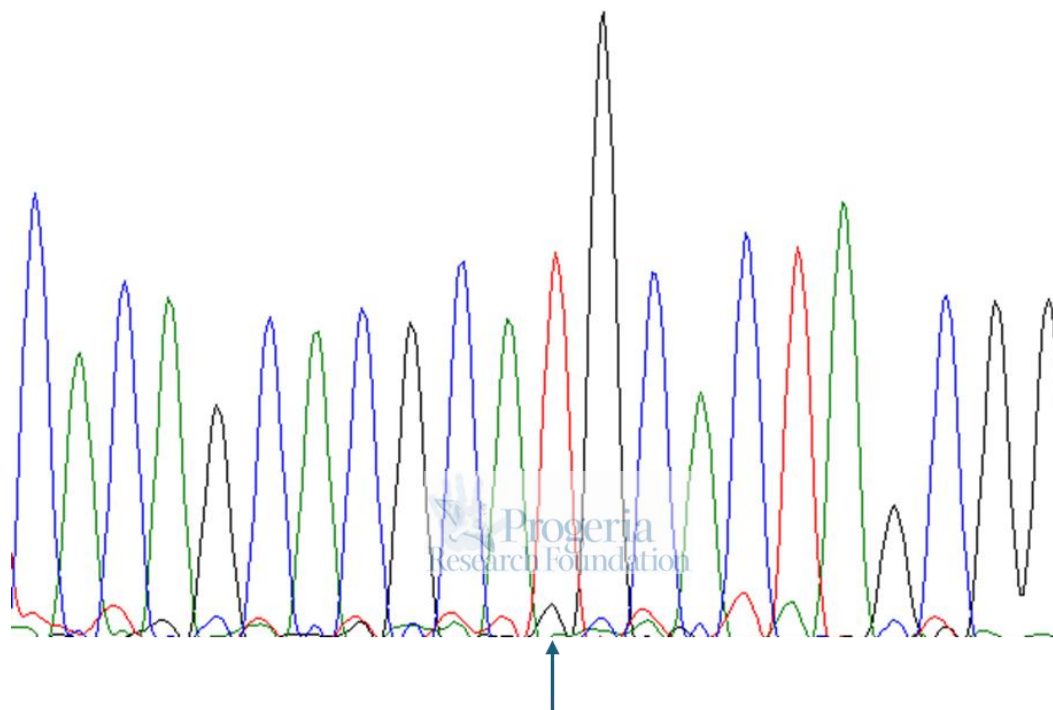
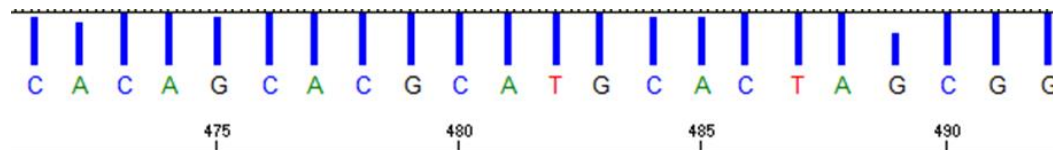
PSADFN576

LMNA Exon 11/Intron 11 junction, heterozygous c.1968+5 G>A



PSADFN906

LMNA Exon 7, homozygous c.1303C>T, p.R435C



Homozygous
c.1303C>T